

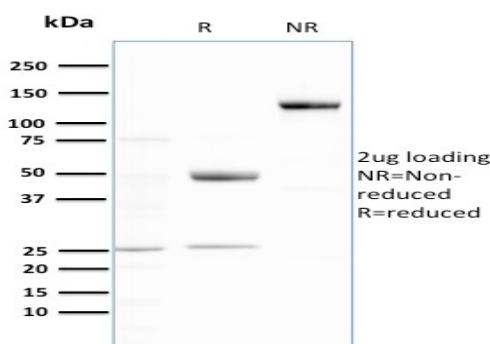
Ubiquitin (Autophagy Marker)

Recombinant Rabbit Monoclonal Antibody [Clone UBB/3143R]

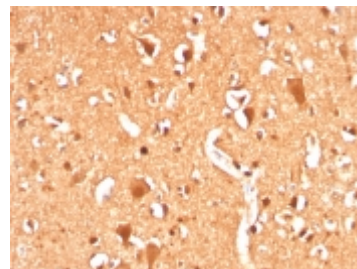
Catalog No	Format	Size	Price (USD)
7314-RBM3-P0	Purified Ab with BSA and Azide at 200ug/ml	20 ug	219.00
7314-RBM3-P1	Purified Ab with BSA and Azide at 200ug/ml	100 ug	499.00
7314-RBM3-P1ABX	Purified Ab WITHOUT BSA and Azide at 1.0mg/ml	100 ug	499.00

Human Entrez Gene ID	7314
Human SwissProt	P0G47; P0G48; P62979; P62987; P62988
Human Unigene	356190; 520348
Human Gene Symbol	UBB
Human Chromosome Location	17p11.2
Synonyms	Epididymis secretory protein Li 50; Polyubiquitin B; RPS27A; UBA52; UBA80; UBB; UBC; UBCEP1; UBCEP2

Immunogen	Recombinant fragment of human Ubiquitin protein (around aa 1-119) (exact sequence is proprietary)
Host / Ig Isotype	Rabbit / IgG
Mol. Weight of Antigen	9kDa
Cellular Localization	Cell Surface, Cytoplasmic and Nuclear
Species Reactivity	Human.
Positive Control	HeLa or Jurkat cells. Alzheimer's Brain.



SDS-PAGE Analysis Purified Ubiquitin Recombinant Rabbit Monoclonal Antibody (UBB/3143R). Confirmation of Purity and Integrity of Antibody.



Specificity & Comments

Ubiquitin is a highly conserved and plays an essential role in the ubiquitin-proteasome pathway. In ubiquitination process, it is first activated by forming a thiol-ester complex with the activation component E1, which is then transferred to ubiquitin-carrier protein E2, followed by to ubiquitin ligase E3 for final delivery to epsilon-NH2 of the target protein lysine residue. Ikb, p53, cdc25A, Bcl-2 etc. are shown as targets of ubiquitin-proteasome process as part of regulation of cell cycle progression, differentiation, cell stress response, and apoptosis. Moreover, ubiquitin have been reported to bind covalently with pathological inclusions which are resistant to degradation e.g. neurofibrillary tangles/paired helical filaments in Alzheimer's disease, Lewy bodies seen in Parkinson's disease, and Pick bodies found in Pick's disease etc.

Known Applications & Suggested Dilutions

Immunohistochemistry (Formalin-fixed) (1-2ug/ml for 30 min at RT)(Staining of formalin-fixed tissues requires heating tissue sections in 10mM Tris with 1mM EDTA, pH 9.0, for 45 min at 95°C followed by cooling at RT for 20 minutes)
Optimal dilution for a specific application should be determined.

Key References

- Hochstrasser, M. 1995. Curr. Opin. Cell Biol. 7: 215-223.

Supplied As

200ug/ml of Ab Purified from Bioreactor Concentrate by Protein A/G. Prepared in 10mM PBS with 0.05% BSA & 0.05% azide. Also available WITHOUT BSA & azide at 1.0mg/ml.

Storage and Stability

Antibody with azide - store at 2 to 8°C. Antibody without azide - store at -20 to -80°C. Antibody is stable for 24 months. Non-hazardous. No MSDS required.

Limitations

This antibody is available for research use only and is not approved for use in diagnosis.

Warranty

There are no warranties, expressed or implied, which extend beyond this description. Company is not liable for any personal injury or economic loss resulting from this product.