

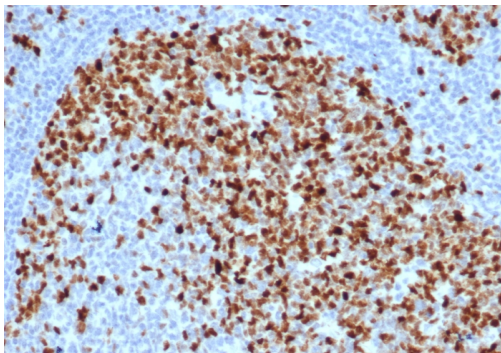
Topoisomerase II alpha (Proliferation & Drug-Resistance Marker)

Recombinant Rabbit Monoclonal Antibody [Clone TOP2A/6570R]

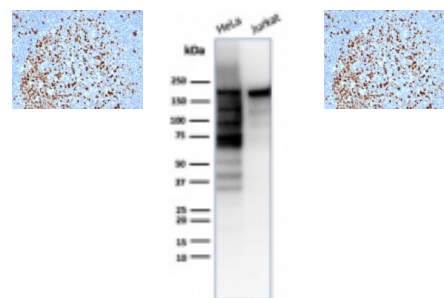
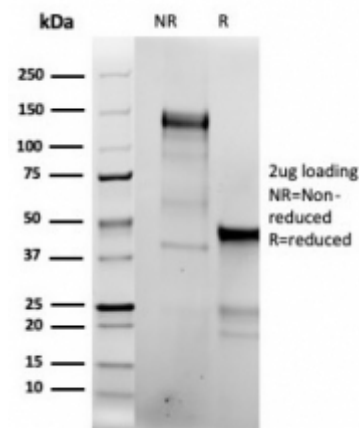
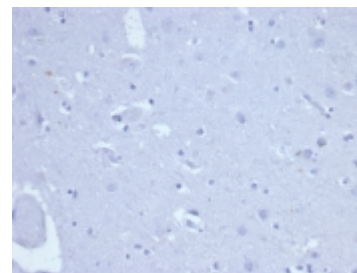
Catalog No	Format	Size	Price (USD)
7153-RBM5-P0	Purified Ab with BSA and Azide at 200ug/ml	20 ug	219.00
7153-RBM5-P1	Purified Ab with BSA and Azide at 200ug/ml	100 ug	499.00
7153-RBM5-P1ABX	Purified Ab WITHOUT BSA and Azide at 1.0mg/ml	100 ug	499.00

Human Entrez Gene ID	7153
Human SwissProt	P11388
Human Unigene	156346
Human Gene Symbol	TOP2A
Human Chromosome Location	17q21.2
Synonyms	ATP hydrolyzing DNA topoisomerase II alfa; DNA gyrase; DNA topoisomerase (ATP hydrolyzing); DNA topoisomerase 2 alpha; DNA topoisomerase II 170kD; DNA topoisomerase II alpha; Topoisomerase DNA II alpha 170kDa; TP2A

Immunogen	Recombinant human Topoisomerase II alpha fragment (aa1352-1493) (exact sequence is proprietary)
Host / Ig Isotype	Rabbit / IgG
Mol. Weight of Antigen	170kDa
Cellular Localization	Nuclear
Species Reactivity	Human.
Positive Control	HeLa or Jurkat cells. Human tonsil or esophagus.



Formalin-fixed, paraffin-embedded human tonsil stained with Topo IIa Recombinant Rabbit Monoclonal Antibody (TOP2A/6570R).



Specificity & Comments

The topoisomerase II- β isoform is a 170kDa nuclear protein and plays an important role in DNA synthesis and RNA transcription, as well as chromosomal segregation during mitosis. Topoisomerase II- β is reported to be a sensitive and specific marker of late S-, G2- & M-phases in transformed and developmentally regulated normal cells, and has been shown to be over-expressed in many human cancers. Decreased expression of Topoisomerase II- β is the predominant mechanism of resistance to several chemotherapeutic agents.

Known Applications & Suggested Dilutions

Western Blot (2-4ug/ml)

Immunohistochemistry (Formalin-fixed) (1-2ug/ml for 30 minutes at RT)

(Staining of formalin-fixed tissues requires heating tissue sections in 10mM Tris with 1mM EDTA, pH 9.0, for 45 min at 95 °C followed by cooling at RT for 20 minutes)

Optimal dilution for a specific application should be determined.

Key References

1. Lynch BJ, et al. Hum. Pathol. 1997 Oct;28(10):1180-8
2. Gupta D, et al. Appl. Immunohistochem. Mol. Morphol. 2001 Sep;9(3):215-21.

Supplied As

200ug/ml of Ab purified from Bioreactor Concentrate by Protein A/G. Prepared in 10mM PBS with 0.05% BSA & 0.05% azide. Also available WITHOUT BSA & azide at 1.0mg/ml.

Storage and Stability

Antibody with azide - store at 2 to 8 °C. Antibody without azide - store at -20 to -80 °C. Antibody is stable for 24 months. Non-hazardous. No MSDS required.

Limitations

This antibody is available for research use only and is not approved for use in diagnosis.

Warranty

There are no warranties, expressed or implied, which extend beyond this description. Company is not liable for any personal injury or economic loss resulting from this product.