

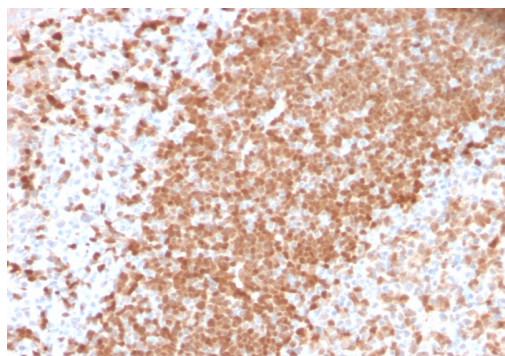
## TCL1 (T-Cell Marker)

Recombinant Rabbit Monoclonal Antibody [Clone TCL1/2747R]

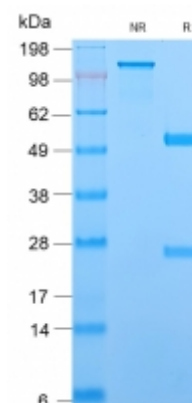
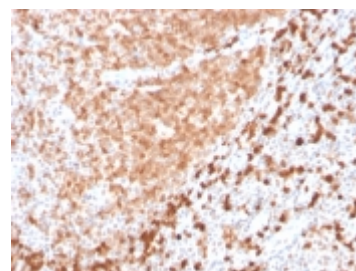
Catalog No	Format	Size	Price (USD)
8115-RBM3-P0	Purified Ab with BSA and Azide at 200ug/ml	20 ug	219.00
8115-RBM3-P1	Purified Ab with BSA and Azide at 200ug/ml	100 ug	499.00
8115-RBM3-P1ABX	Purified Ab WITHOUT BSA and Azide at 1.0mg/ml	100 ug	499.00

Human Entrez Gene ID	10232
Human SwissProt	P56279
Human Unigene	2484
Human Gene Symbol	TCL1A
Human Chromosome Location	14q32.13
Synonyms	TCL1A; Lymphoma/leukemia, T-cell; Oncogene TCL1; P14 TCL1; T cell leukemia 1; T cell lymphoma 1; T cell lymphoma 1A; T-cell leukemia/lymphoma 1A; TCL1; TCL1A

Immunogen	Recombinant human TCL1 protein fragment (around aa 2-109) (exact sequence is proprietary)
Host / Ig Isotype	Rabbit / IgG
Mol. Weight of Antigen	14kDa
Cellular Localization	Nuclear and Cytoplasmic
Species Reactivity	Human.
Positive Control	Ramos or Raji cells. Tonsil or T-cell Lymphoma.



Formalin-fixed, paraffin-embedded human Tonsil stained with TCL1 Recombinant Rabbit Monoclonal Antibody (TCL1/2747R).



2.5 µg loading  
NR = Non-reduced  
R = Reduced

### Specificity & Comments

T-cell leukemia/Lymphoma Protein 1A (TCL-1A), also known as p14TCL1 is a product of the TCL1 gene that is involved in T-cell prolymphocytic leukemia (TPLL). T-PLL is a rare form of mature T-cell leukemia, which is consistently associated with chromosomal rearrangements characterized by the juxtaposition of the TCRA locus on chromosome 14q11 and the TCL1A gene on 14q32.13. TCL1 is overexpressed in Burkitt lymphoma, the majority of AIDS-related non-Hodgkin lymphoma-designated immunoblastic plasmacytoid lymphoma, lymphoblastic lymphoma, chronic lymphocytic leukemia, mantle cell lymphoma, follicular lymphoma, diffuse large B-cell lymphoma, and primary cutaneous B-cell lymphoma.

### Known Applications & Suggested Dilutions

Immunohistochemistry (Formalin-fixed) (1-2ug/ml for 30 minutes at RT)(Staining of formalin-fixed tissues requires heating tissue sections in 10mM Tris with 1mM EDTA, pH 9.0, for 45 min at 95&degC followed by cooling at RT for 20 minutes)  
Optimal dilution for a specific application should be determined.

### Key References

1. Roos J, et al. Pathobiology. 2001; 69:59-66.
2. Narducci MG, et al. Cancer Res. 2000; 60:2095-100.

### Supplied As

200ug/ml of Ab Purified from Bioreactor Concentrate by Protein A/G. Prepared in 10mM PBS with 0.05% BSA & 0.05% azide. Also available WITHOUT BSA & azide at 1.0mg/ml.

### Storage and Stability

Antibody with azide - store at 2 to 8°C. Antibody without azide - store at -20 to -80°C. Antibody is stable for 24 months. Non-hazardous. No MSDS required.

### Limitations

This antibody is available for research use only and is not approved for use in diagnosis.

### Warranty

There are no warranties, expressed or implied, which extend beyond this description. Company is not liable for any personal injury or economic loss resulting from this product.