

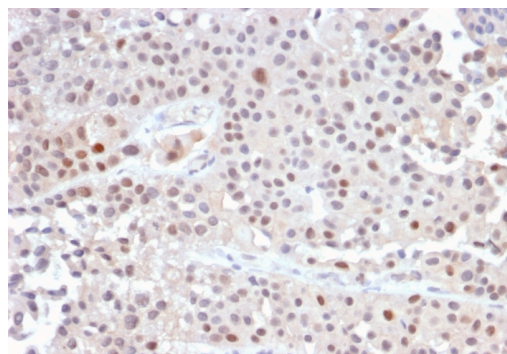
## p21WAF1 (Tumor Suppressor Protein)

Recombinant Rabbit Monoclonal Antibody [Clone CIP1/2489R]

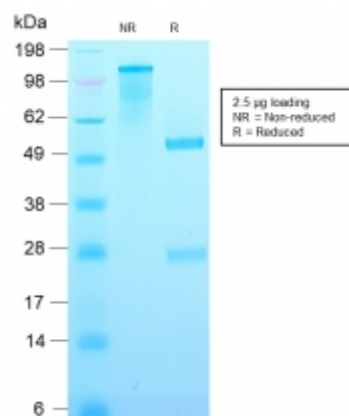
Catalog No	Format	Size	Price (USD)
1026-RBM9-P0	Purified Ab with BSA and Azide at 200ug/ml	20 ug	219.00
1026-RBM9-P1	Purified Ab with BSA and Azide at 200ug/ml	100 ug	499.00
1026-RBM9-P1ABX	Purified Ab WITHOUT BSA and Azide at 1.0mg/ml	100 ug	499.00

Human Entrez Gene ID	1026
Human SwissProt	P38936
Human Unigene	370771
Human Gene Symbol	CDKN1A
Human Chromosome Location	6p21.31
Synonyms	Activating Fragment 1, CAP20, CDK-interacting protein 1, CDKI, CDKN1, CDKN1A, CIP1, Cyclin-dependent kinase inhibitor 1A (p21, Cip1), DNA Synthesis Inhibitor, MDA6, Melanoma Differentiation Associated Protein 6, p21Cip1/Waf1, PIC1, SDI1, SLC12A9, Wild type p53 activated fragment 1 (WAF1)

Immunogen	Recombinant full-length human CDKN1A protein
Host / Ig Isotype	Rabbit / IgG
Mol. Weight of Antigen	21kDa
Cellular Localization	Nuclear
Species Reactivity	Human. Does not react with Mouse or Rat.
Positive Control	HeLa cells. Skin, colon or breast carcinoma.



Formalin-fixed, paraffin-embedded human Urothelial Carcinoma stained with p21 Rabbit Recombinant Monoclonal Antibody (CIP1/2489R).



### Specificity & Comments

This MAb recognizes a 21kDa protein, identified as the p21WAF1 tumor suppressor protein. This MAb is highly specific to p21 and shows no cross-reaction with other closely related mitotic inhibitors. p21WAF1 is a specific inhibitor of cdk's and a tumor suppressor involved in the pathogenesis of a variety of malignancies. The expression of this gene acts as an inhibitor of the cell cycle during G1 phase and is tightly controlled by the tumor suppressor protein p53. Its expression is induced by the wild type, but not mutant, p53 suppressor protein. Normal cells generally display a rather intense nuclear p21 expression. Loss of p21 expression has been reported in many carcinomas (gastric carcinoma, non-small cell lung carcinoma, thyroid carcinoma).

### Known Applications & Suggested Dilutions

Immunohistochemistry (Formalin-fixed) (1-2ug/ml for 30 minutes at RT)(Staining of formalin-fixed tissues requires heating tissue sections in 10mM Tris with 1mM EDTA, pH 9.0, for 45 min at 95degC followed by cooling at RT for 20 minutes)  
Optimal dilution for a specific application should be determined.

### Key References

- Harper, J.W., et al. 1993. Cell 75: 805-816.

### Supplied As

200ug/ml of Ab Purified from Bioreactor Concentrate by Protein A/G. Prepared in 10mM PBS with 0.05% BSA & 0.05% azide. Also available WITHOUT BSA & azide at 1.0mg/ml.

### Storage and Stability

Antibody with azide - store at 2 to 8°C. Antibody without azide - store at -20 to -80°C. Antibody is stable for 24 months. Non-hazardous. No MSDS required.

### Limitations

This antibody is available for research use only and is not approved for use in diagnosis.

### Warranty

There are no warranties, expressed or implied, which extend beyond this description. Company is not liable for any personal injury or economic loss resulting from this product.