

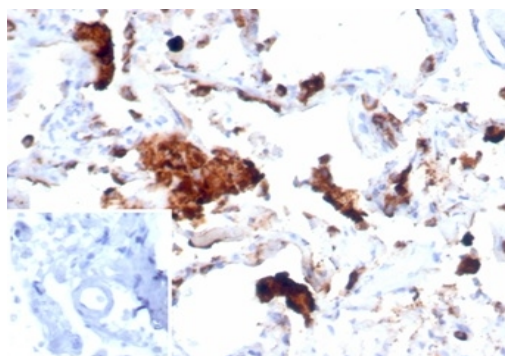
Napsin A (Lung Adenocarcinoma Marker)

Recombinant Rabbit Monoclonal Antibody [Clone NAPSA/7043R]

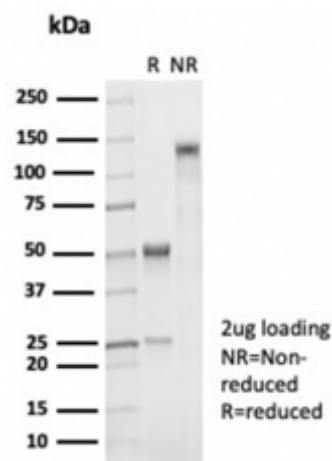
Catalog No	Format	Size	Price (USD)
9476-RBM17-P0	Purified Ab with BSA and Azide at 200ug/ml	20 ug	219.00
9476-RBM17-P1	Purified Ab with BSA and Azide at 200ug/ml	100 ug	499.00
9476-RBM17-P1ABX	Purified Ab WITHOUT BSA at 1.0mg/ml	100 ug	499.00

Human Entrez Gene ID	9476
Human SwissProt	O96009
Human Unigene	512843
Human Gene Symbol	NAPSA
Human Chromosome Location	19q13.33
Synonyms	ASP4, Aspartyl protease 4, KAP, Kidney derived aspartic protease like protein (Kdap), NAP1, NAPA, Napsa, napsin A aspartic peptidase, Pronapsin A, SNAPA

Immunogen	Recombinant human Napsin-A protein fragment (aa1-100) (exact sequence is proprietary)
Host / Ig Isotype	Rabbit / IgG, kappa
Mol. Weight of Antigen	37kDa
Cellular Localization	Cytoplasm.
Species Reactivity	Human.
Positive Control	Human lung or lung adenocarcinoma.



Formalin-fixed, paraffin-embedded human lung stained with Napsin A Recombinant Rabbit Monoclonal Antibody (NAPSA/7043R). Inset: PBS instead of primary antibody, secondary negative control.



Specificity & Comments

Napsin is a pepsin-like aspartic proteinase connected with maturation of surfactant protein B. There are two closely related napsins, napsin A and napsin B. Napsin A is expressed as a single chain protein. Immunohistochemical studies revealed high expression levels of napsin A in human lung and kidney but low expression in spleen. Napsin A is expressed in type II pneumocytes and in adenocarcinomas of lung. The high specificity expression of napsin A in adenocarcinomas of lung is useful to distinguish primary lung adenocarcinomas from adenocarcinomas of other organs.

Known Applications & Suggested Dilutions

Immunohistochemistry (Formalin-fixed) (1-2ug/ml for 30 minutes at RT) (Staining of formalin-fixed tissues requires heating tissue sections in 10mM Tris with 1mM EDTA, pH 9.0, for 45 min at 95 °C followed by cooling at RT for 20 minutes)
Optimal dilution for a specific application should be determined.

Key References

Supplied As

200ug/ml of Ab purified from rabbit anti-serum by Protein A. Prepared in 10mM PBS with 0.05% BSA & 0.05% azide. Also available WITHOUT BSA at 1.0mg/ml.

Storage and Stability

Antibody with azide - store at 2 to 8 °C. Antibody without azide - store at -20 to -80 °C. Antibody is stable for 24 months. Non-hazardous. No MSDS required.

Limitations

This antibody is available for research use only and is not approved for use in diagnosis.

Warranty

There are no warranties, expressed or implied, which extend beyond this description. Company is not liable for any personal injury or economic loss resulting from this product.