

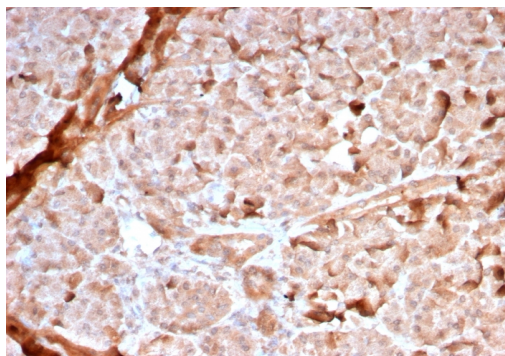
## Mitochondria (Marker for Human Cells, Granular RCC's & Salivary Tumors)

Recombinant Rabbit Monoclonal Antibody [Clone MTC02/2860R]

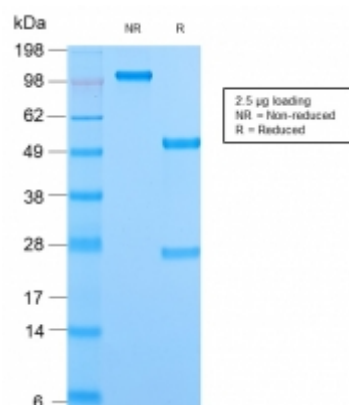
Catalog No	Format	Size	Price (USD)
RBM6-2860-P0	Purified Ab with BSA and Azide at 200ug/ml	20 ug	219.00
RBM6-2860-P1	Purified Ab with BSA and Azide at 200ug/ml	100 ug	499.00
RBM6-2860-P1ABX	Purified Ab WITHOUT BSA and Azide at 1.0mg/ml	100 ug	499.00

Human Entrez Gene ID	Not Known
Human SwissProt	Not Known
Human Unigene	Not Known
Human Gene Symbol	Not Known
Human Chromosome Location	Not Known
Synonyms	Not Known

Immunogen	Semi-Purified mitochondrial preparation
Host / Ig Isotype	Rabbit / IgG
Mol. Weight of Antigen	60kDa
Cellular Localization	Mitochondria in cytoplasm
Species Reactivity	Human. Does not react with Mouse or Rat.
Positive Control	HeLa or HepG2 cells. Hepatic carcinoma.



Formalin-fixed, paraffin-embedded human Pancreas stained with Mitochondria Rabbit Recombinant Monoclonal Antibody (MTC02/2860R).



### Specificity & Comments

This MAb recognizes a 60kDa antigen associated with the mitochondria in human cells. It can be used to stain mitochondria in cell or tissue preparations and can be used as a mitochondrial marker in subcellular fractions. It produces a spaghetti-like pattern in normal and malignant cells. This antibody is an excellent marker for human cells in xenographic model research. It reacts specifically with human cells, including neurons and embryonic stem cells. Immunostaining pattern with anti-mitochondrial MAb has been reported as a useful discriminatory adjunct in the complex differential diagnosis of granular renal cell tumors. Reportedly, this MAb facilitates the classification of salivary tumors.

### Known Applications & Suggested Dilutions

Immunohistochemistry (Formalin-fixed) (1-2ug/ml for 30 minutes at RT)(Staining of formalin-fixed tissues requires heating tissue sections in 10mM Tris buffer with 1mM EDTA, pH 9.0, for 45 min at 95degC followed by cooling at RT for 20 minutes)Optimal dilution for a specific application should be determined.

### Key References

- Vera-Sempere F, et al. Acta Otorrinolaringol Esp. 2011;62(1):1-9.
- Tickoo SK, et al. Am J Surg Pathol. 1997;21(8):922-30.

### Supplied As

200ug/ml of Ab Purified from Bioreactor Concentrate by Protein A/G. Prepared in 10mM PBS with 0.05% BSA & 0.05% azide. Also available WITHOUT BSA at 1.0mg/ml.

### Storage and Stability

Antibody with azide - store at 2 to 8°C. Antibody is stable for 24 months. Non-hazardous. No MSDS required.

### Limitations

This antibody is available for research use only and is not approved for use in diagnosis.

### Warranty

There are no warranties, expressed or implied, which extend beyond this description. Company is not liable for any personal injury or economic loss resulting from this product.