

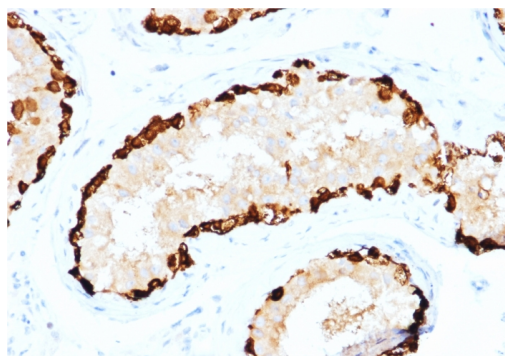
Melanoma Antigen Family A, 4 / MAGEA4

Mouse Monoclonal Antibody [Clone CPTC-MAGEA4-1]

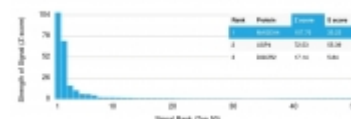
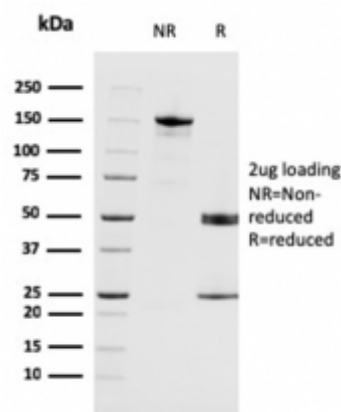
Catalog No	Format	Size	Price (USD)
4103-MSM1-P0	Purified Ab with BSA and Azide at 200ug/ml	20 ug	219.00
4103-MSM1-P1	Purified Ab with BSA and Azide at 200ug/ml	100 ug	499.00
4103-MSM1-P1ABX	Purified Ab WITHOUT BSA and Azide at 1.0mg/ml	100 ug	499.00

Human Entrez Gene ID	4103
Human SwissProt	P43358
Human Unigene	37107
Human Gene Symbol	MAGEA4
Human Chromosome Location	Xq28
Synonyms	CT1.4; MAGE-41; MAGE-X2; MAGE4; MAGE4A; MAGE4B; cancer/testis antigen 1.4; Melanoma-associated antigen 4

Immunogen	Recombinant full-length human MAGEA4 protein
Host / Ig Isotype	Mouse / IgG2c, kappa
Mol. Weight of Antigen	45-50kDa
Cellular Localization	Cytoplasmic and nuclear.
Species Reactivity	Human.
Positive Control	HepG2 cell lysate; melanoma, testes and placenta.



Formalin-fixed, paraffin-embedded human Testis stained with MAGEA4 Mouse Monoclonal Antibody (CPTC-MAGEA4-1).



Specificity & Comments

The melanoma-associated antigen (MAGE) family consists of a number of antigens recognized by cytotoxic T lymphocytes. The MAGE genes were initially isolated from different kinds of tumors, and based on their virtually exclusive tumor-specific expression in adult tissues, they have been used as targets for cancer immunotherapy. MAGE genes encode for tumor-rejection antigens and are expressed in tumors of different histologic types, but not in normal tissues, with the exception of testis and placenta.

Known Applications & Suggested Dilutions

Immunohistochemistry (Formalin-fixed) (1-2ug/ml for 30 min at RT)(Staining of formalin-fixed tissues requires heating tissue sections in 10mM Tris with 1mM EDTA, pH 9.0, for 45 min at 95°C followed by cooling at RT for 20 minutes)
Optimal dilution for a specific application should be determined.

Key References

1. Rogner, UC, et al. Genomics., U.S. National Library of Medicine, 10 Oct. 1995.

Supplied As

200ug/ml of Ab Purified from Bioreactor Concentrate by Protein A/G. Prepared in 10mM PBS with 0.05% BSA & 0.05% azide. Also available WITHOUT BSA & azide at 1.0mg/ml.

Storage and Stability

Antibody with azide - store at 2 to 8°C. Antibody without azide - store at -20 to -80°C. Antibody is stable for 24 months. Non-hazardous. No MSDS required.

Limitations

This antibody is available for research use only and is not approved for use in diagnosis.

Warranty

There are no warranties, expressed or implied, which extend beyond this description. Company is not liable for any personal injury or economic loss resulting from this product.