

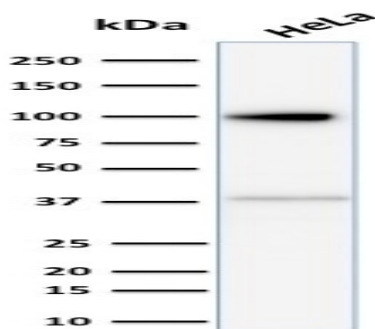
Major Vault Protein (MVP)

Mouse Monoclonal Antibody [Clone 1014]

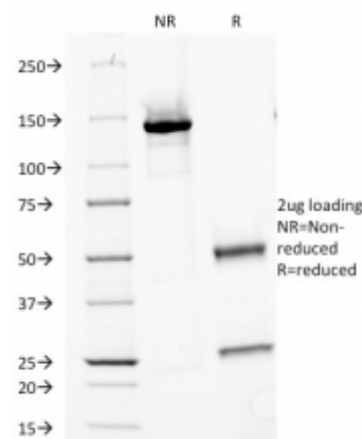
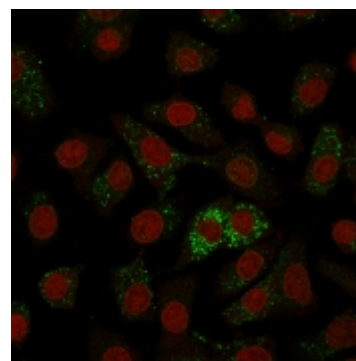
Catalog No	Format	Size	Price (USD)
9961-MSM1-P0	Purified Ab with BSA and Azide at 200ug/ml	20 ug	219.00
9961-MSM1-P1	Purified Ab with BSA and Azide at 200ug/ml	100 ug	499.00
9961-MSM1-P1ABX	Purified Ab WITHOUT BSA and Azide at 1.0mg/ml	100 ug	499.00

Human Entrez Gene ID	9961
Human SwissProt	Q14764
Human Unigene	632177
Human Gene Symbol	MVP
Human Chromosome Location	16p11.2
Synonyms	Lung resistance-related protein (LRP); Major Vault Protein; MVP; VAULT1

Immunogen	proteins precipitated from human breast cancer MCF-7 cells
Host / Ig Isotype	Mouse / IgG1, kappa
Mol. Weight of Antigen	104-110kDa
Cellular Localization	Cytoplasmic
Species Reactivity	Human.
Positive Control	MCF-7 or HeLa cells. Breast tumors.



Western Blot Analysis of human HeLa cell lysate using Major Vault Protein (MVP) Mouse Monoclonal Antibody (Clone 1014).



Specificity & Comments

Recognizes a protein of 104kDa-110kDa, characterized as major vault protein (MVP). Vaults are large ribonucleoprotein particles (RNPs) present in all eukaryotic cells. They have a complex morphology, including several small molecules of RNA, but a single protein species. The MVP accounts for 70% of their mass. Their shape is reminiscent of the nucleopore central plug. Treatment of cells with estradiol increases the amount of MVP in nuclear extract. The hormone-dependent interaction of vaults with ER is prevented in vitro by sodium molybdate. Antibodies to estrogen, progesterone and glucocorticoid receptors are able to co-immunoprecipitate the MVP. MVP is overexpressed in many neoplastic tissues and cell lines. Expression of MVP predicts a poor response to chemotherapy.

Known Applications & Suggested Dilutions

Flow Cytometry (1-2ug/million cells)
Immunofluorescence (1-2ug/ml)
Optimal dilution for a specific application should be determined.

Key References

- Den Boer, M.L. et al. Blood 91, 2092-2098 (1998).
- Abbondanza C., et al. J Cell Biol 1998;141(6):1301-1310.

Supplied As

200ug/ml of Ab Purified from Bioreactor Concentrate by Protein A/G. Prepared in 10mM PBS with 0.05% BSA & 0.05% azide. Also available WITHOUT BSA & azide at 1.0mg/ml.

Storage and Stability

Antibody with azide - store at 2 to 8°C. Antibody without azide - store at -20 to -80°C. Antibody is stable for 24 months. Non-hazardous. No MSDS required.

Limitations

This antibody is available for research use only and is not approved for use in diagnosis.

Warranty

There are no warranties, expressed or implied, which extend beyond this description. Company is not liable for any personal injury or economic loss resulting from this product.