

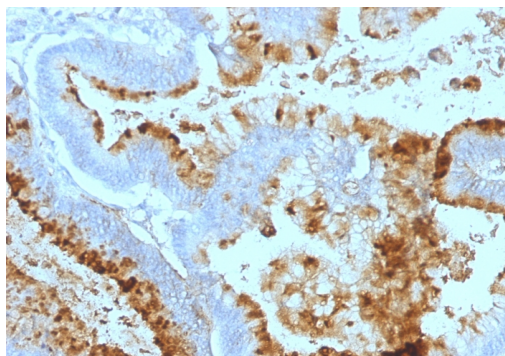
Lewis A (Blood Group Antigen)

Mouse Monoclonal Antibody [Clone 7LE]

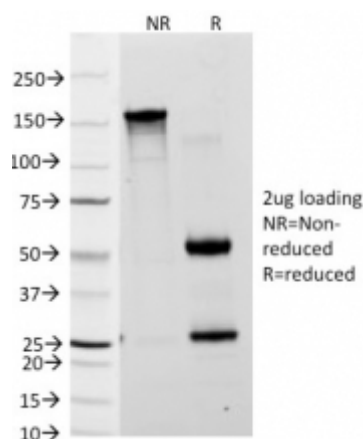
Catalog No	Format	Size	Price (USD)
MSM1-311-P0	Purified Ab with BSA and Azide at 200ug/ml	20 ug	219.00
MSM1-311-P1	Purified Ab with BSA and Azide at 200ug/ml	100 ug	499.00
MSM1-311-P1ABX	Purified Ab WITHOUT BSA and Azide at 1.0mg/ml	100 ug	499.00

Human Entrez Gene ID	Not Applicable
Human SwissProt	Not Applicable
Human Unigene	Not Applicable
Human Gene Symbol	Not Applicable
Human Chromosome Location	Not Applicable
Synonyms	Lewis A antigen

Immunogen	Mucins isolated from ovarian cyst fluid
Host / Ig Isotype	Mouse / IgG1, kappa
Mol. Weight of Antigen	Multiple
Cellular Localization	Cell membrane, cytoplasmic and extracellular
Species Reactivity	Human. Mouse.
Positive Control	Colon tissue.



Formalin-fixed, paraffin-embedded human Colon Carcinoma stained with Lewis A Monoclonal Antibody (7LE).



Specificity & Comments

Recognizes a carbohydrate determinant of Gal 1-3(Fuc 1-4) GlcNAc which is blood group antigen Lewis A. It is present primarily on epithelial cells such as colon and kidneys. In the tumors and dedifferentiated tissues, decrease of Lewis A antigen was observed. Lewis A (type 1 chain) is expressed in colonic epithelial cells and may be useful for detection of gastrointestinal tumors, pancreatic cancer, and colorectal tumors. Blood group related antigens represent a group of carbohydrate determinants carried on both glycolipids and glycoproteins. They are usually mucin-type, and are detected on erythrocytes, certain epithelial cells, and in secretions of certain individuals. Sixteen genetically and biosynthetically distinct but inter-related specificities belong to this group of antigens, including A, B, H, Lewis A, Lewis B, Lewis X, Lewis Y, and precursor type 1 chain antigens.

Known Applications & Suggested Dilutions

Flow Cytometry (1-2ug/million cells)
Immunofluorescence (1-2ug/ml)
Immunohistochemistry (Formalin-fixed) (1-2ug/ml for 30 minutes at RT)(Staining of formalin-fixed tissues requires heating tissue sections in 10mM Tris with 1mM EDTA, pH 9.0, for 45 min at 95°C followed by cooling at RT for 20 minutes)
Optimal dilution for a specific application should be determined.

Key References

1. Cancer Epidemiology, Biomarkers Prevention 1, 199-205 (1992).
2. Gastroenterology, 102 (2), 424-430 (1992).
3. Blood transfusion and immunohaematology, Ph. Rouger, D Anstee and Ch. Salmon (Eds). Arnette, France 30 (5): 353-720 (1987).

Supplied As

200ug/ml of Ab Purified from Bioreactor Concentrate by Protein A/G. Prepared in 10mM PBS with 0.05% BSA & 0.05% azide. Also available WITHOUT BSA & azide at 1.0mg/ml.

Storage and Stability

Antibody with azide - store at 2 to 8°C. Antibody without azide - store at -20 to -80°C. Antibody is stable for 24 months. Non-hazardous. No MSDS required.

Limitations

This antibody is available for research use only and is not approved for use in diagnosis.

Warranty

There are no warranties, expressed or implied, which extend beyond this description. Company is not liable for any personal injury or economic loss resulting from this product.