

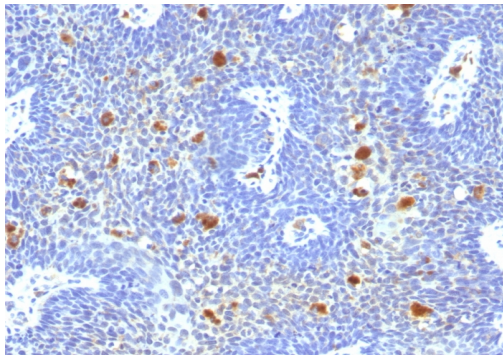
HPV-16 (Human Papilloma Virus 16)

Mouse Monoclonal Antibody [Clone HPV16/1296]

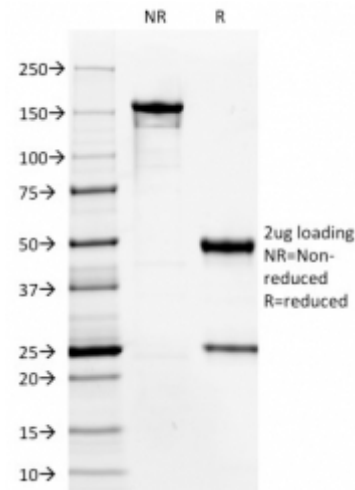
Catalog No	Format	Size	Price (USD)
MSM4-1296-P0	Purified Ab with BSA and Azide at 200ug/ml	20 ug	219.00
MSM4-1296-P1	Purified Ab with BSA and Azide at 200ug/ml	100 ug	499.00
MSM4-1296-P1ABX	Purified Ab WITHOUT BSA and Azide at 1.0mg/ml	100 ug	499.00

Human Entrez Gene ID	Not Applicable
Human SwissProt	Not Applicable
Human Unigene	Not Applicable
Human Gene Symbol	Not Applicable
Human Chromosome Location	Not Applicable
Synonyms	HPV-16; HPV-16 capsid; HPV16 L1; HPV16 major capsid protein L1; Human papillomavirus type 16 L1; Human papillomavirus type 16 major capsid protein L1

Immunogen	Human papilloma virus type 16
Host / Ig Isotype	Mouse / IgG2a, kappa
Mol. Weight of Antigen	16kDa
Cellular Localization	Nuclear
Species Reactivity	Type 16 of Human Papilloma Virus (HPV-16)
Positive Control	HPV-16 infected cells. Cervical tissue.



Formalin-fixed, paraffin-embedded human Cervix stained with HPV-16 Mouse Monoclonal Antibody (HPV16/1296).



Specificity & Comments

Reacts with E6 protein of human papilloma virus type 16 (HPV-16). Infection with specific types of HPV has been associated with an increased risk of developing cervical neoplasia. HPV types 6 and 11 have been associated with relatively benign diseases such as genital warts but types 16 and 18 are strongly associated with cervical, vaginal, and vulvar malignancies. The antibody reacts very strongly with formalin-fixed, paraffin-embedded tissues containing HPV-16.

Known Applications & Suggested Dilutions

Immunohistochemistry (Formalin-fixed) (1-2ug/ml for 30 minutes at RT)(Staining of formalin-fixed tissues requires heating tissue sections in 10mM Tris with 1mM EDTA, pH 9.0, for 45 min at 95°C followed by cooling at RT for 20 minutes)
Optimal dilution for a specific application should be determined.

Key References

- McLean CS, J Clin Pathol, 1990; 43:488-492.

Supplied As

200ug/ml of Ab Purified from Bioreactor Concentrate by Protein A/G. Prepared in 10mM PBS with 0.05% BSA & 0.05% azide. Also available WITHOUT BSA & azide at 1.0mg/ml.

Storage and Stability

Antibody with azide - store at 2 to 8°C. Antibody without azide - store at -20 to -80°C. Antibody is stable for 24 months. Non-hazardous. No MSDS required.

Limitations

This antibody is available for research use only and is not approved for use in diagnosis.

Warranty

There are no warranties, expressed or implied, which extend beyond this description. Company is not liable for any personal injury or economic loss resulting from this product.