

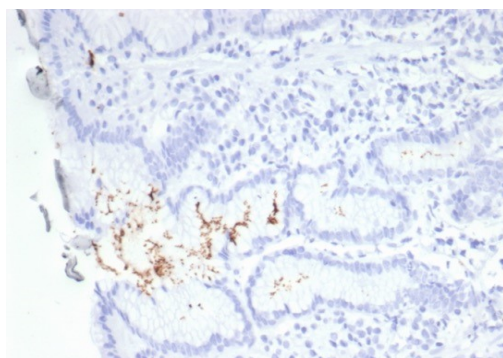
## Helicobacter pylori (Catalase)

Mouse Monoclonal Antibody [Clone HPYL/7229]

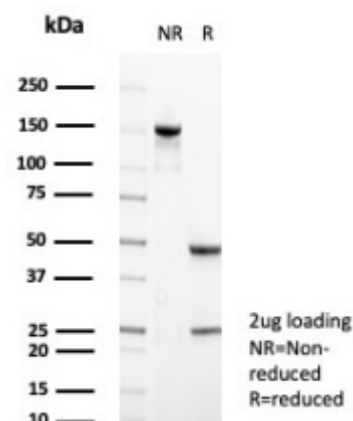
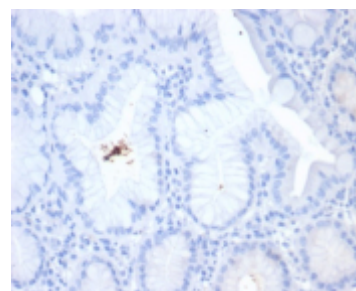
Catalog No	Format	Size	Price (USD)
MSM19-7229-P0	Purified Ab with BSA and Azide at 200ug/ml	20 ug	219.00
MSM19-7229-P1	Purified Ab with BSA and Azide at 200ug/ml	100 ug	499.00
MSM19-7229-P1ABX	Purified Ab WITHOUT BSA at 1.0mg/ml	100 ug	499.00

Human Entrez Gene ID	Not Applicable
Human SwissProt	Not Applicable
Human Unigene	Not Applicable
Human Gene Symbol	Not Applicable
Human Chromosome Location	Not Applicable
Synonyms	H. pylori

Immunogen	Recombinant Helicobacter pylori Catalase protein fragment (around aa323-445) (Exact sequence is proprietary)
Host / Ig Isotype	Mouse / IgG1, kappa
Mol. Weight of Antigen	58kDa
Cellular Localization	Cell surface, Cytoplasm.
Species Reactivity	Helicobacter pylori
Positive Control	Helicobacter pylori infected stomach biopsy



Formalin-fixed, paraffin-embedded H. pylori-infected human stomach stained with Helicobacter pylori (Catalase) Mouse Monoclonal Antibody (HPYL/7229). HIER: Tris/EDTA, pH9.0, 45min. 2Å<sup>+</sup>: HRP-polymer, 30min. DAB, 5min.



### Specificity & Comments

The spiral shaped bacterium *Helicobacter pylori* is strongly associated with inflammation of the stomach and is also implicated in the development of gastric malignancy. *H. pylori* is known to cause peptic ulcers and chronic gastritis in human. It is associated with duodenal ulcers and may be involved in development of adenocarcinoma and low-grade lymphoma of mucosa associated lymphoid tissue in the stomach. This antibody stains the individual *H. pylori* bacterium when it presents on the surface of the epithelium or in the cytoplasm of the epithelial cells in biopsy tissue sections from the antrum and body of the stomach.

### Known Applications & Suggested Dilutions

Immunohistochemistry (Formalin-fixed) (1-2ug/ml for 30 minutes at RT) (Staining of formalin-fixed tissues requires heating tissue sections in 10mM Tris with 1mM EDTA, pH 9.0, for 45 min at 95°C followed by cooling at RT for 20 minutes)  
Optimal dilution for a specific application should be determined.

### Key References

1. Ito, T., Kobayashi, D., Uchida, K. et al. *Helicobacter pylori* invades the gastric mucosa and translocates to the gastric lymph nodes. *Lab Invest* 88, 664-681 (2008). <https://doi.org/10.1038/labinvest.2008.33>

### Supplied As

200ug/ml of Ab purified from Bioreactor Concentrate by Protein A/G. Prepared in 10mM PBS with 0.05% BSA & 0.05% azide. Also available WITHOUT BSA & azide at 1.0mg/ml.

### Storage and Stability

Antibody with azide - store at 2 to 8°C. Antibody without azide - store at -20 to -80°C. Antibody is stable for 24 months. Non-hazardous. No MSDS required.

### Limitations

This antibody is available for research use only and is not approved for use in diagnosis.

### Warranty

There are no warranties, expressed or implied, which extend beyond this description. Company is not liable for any personal injury or economic loss resulting from this product.