

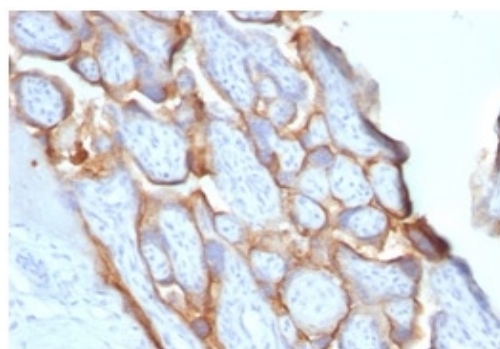
## HCG-beta (Pregnancy & Choriocarcinoma Marker)

Recombinant Rabbit Monoclonal Antibody [Clone HCGb/1996R]

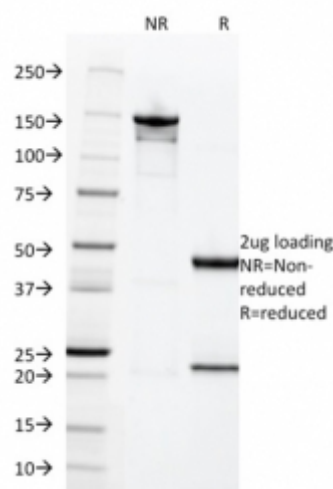
Catalog No	Format	Size	Price (USD)
1082-RBM6-P0	Purified Ab with BSA and Azide at 200ug/ml	20 ug	219.00
1082-RBM6-P1	Purified Ab with BSA and Azide at 200ug/ml	100 ug	499.00
1082-RBM6-P1ABX	Purified Ab WITHOUT BSA and Azide at 1.0mg/ml	100 ug	499.00

Human Entrez Gene ID	1082
Human SwissProt	P01233
Human Unigene	172944
Human Gene Symbol	CGB
Human Chromosome Location	19q13.33
Synonyms	CG-beta; CGB3; CGB5; CGB7; CGB8; Choriogonadotropin Subunit beta; hCGB

Immunogen	Recombinant full-length hCG beta protein
Host / Ig Isotype	Rabbit / IgG
Mol. Weight of Antigen	22kDa
Cellular Localization	Cytoplasmic, secreted
Species Reactivity	Human.
Positive Control	JAR or TT cells. Placenta.



Formalin-fixed, paraffin-embedded human placenta stained with HCG-beta Rabbit Recombinant Monoclonal Antibody (HCGb/1996R).



### Specificity & Comments

This MAb reacts with a protein of 22kDa, identified as beta sub-unit of HCG. It does not cross react with the alpha sub-unit. HCG is a glycoprotein, which is secreted in large quantities by normal trophoblasts. It is present only in trace amounts in non-pregnant urine and sera but rises sharply during pregnancy. HCG is composed of two non-identical, non-covalently linked polypeptide chains designated as the subunit is identical to that of thyroid stimulating hormone (TSH) follicle stimulating hormone (FSH), and luteinizing hormone (LH). hCG MAb detects cells and tumors of trophoblastic origin such as choriocarcinoma. Large cell carcinoma and adenocarcinoma of the lung demonstrate anti-hCG positivity in 90% and 60% of cases respectively. 20% of lung squamous cell carcinomas are positive. hCG expression by non-trophoblastic tumors may indicate aggressive behavior.

### Known Applications & Suggested Dilutions

Immunohistochemistry (Formalin-fixed) (1-2ug/ml  
30 min RT) (Staining of formalin-fixed tissues requires heating tissue sections in 10mM Tris with 1mM EDTA, pH 9.0, for 45 min at 95&degC followed by cooling at RT for 20 minutes)  
Optimal dilution for a specific application should be determined.

### Key References

1. Cocquebert M et. al. Am J Physiol Endocrinol Metab. 2012;303(8):E950-8.

### Supplied As

200ug/ml of Ab Purified from Bioreactor Concentrate by Protein A/G. Prepared in 10mM PBS with 0.05% BSA & 0.05% azide. Also available WITHOUT BSA & azide at 1.0mg/ml.

### Storage and Stability

Antibody with azide - store at 2 to 8°C. Antibody without azide - store at -20 to -80°C. Antibody is stable for 24 months. Non-hazardous. No MSDS required.

### Limitations

This antibody is available for research use only and is not approved for use in diagnosis.

### Warranty

There are no warranties, expressed or implied, which extend beyond this description. Company is not liable for any personal injury or economic loss resulting from this product.