

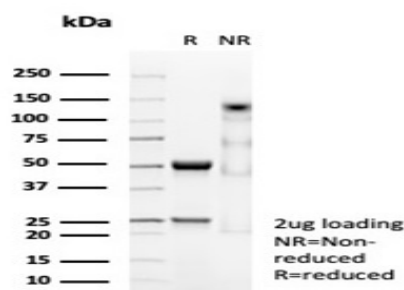
Desmin (Muscle Cell Marker)

Mouse Monoclonal Antibody [Clone DES/3255]

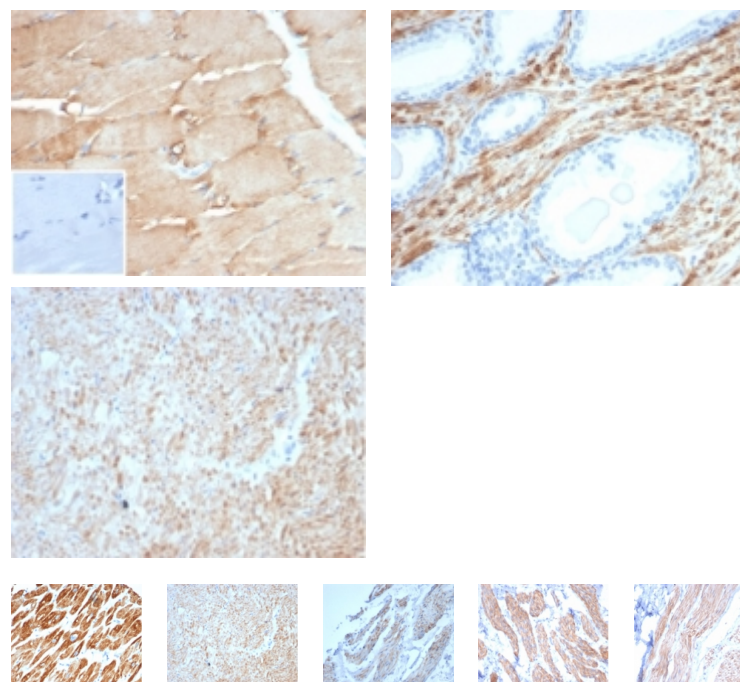
Catalog No	Format	Size	Price (USD)
1674-MSM5-P0	Purified Ab with BSA and Azide at 200ug/ml	20 ug	219.00
1674-MSM5-P1	Purified Ab with BSA and Azide at 200ug/ml	100 ug	499.00
1674-MSM5-P1ABX	Purified Ab WITHOUT BSA and Azide at 1.0mg/ml	100 ug	499.00

Human Entrez Gene ID	1674
Human SwissProt	P17661
Human Unigene	594952
Human Gene Symbol	DES
Human Chromosome Location	2q35
Synonyms	CMD11; CSM1; CSM2; DES; Intermediate filament protein

Immunogen	Recombinant full-length human desmin protein
Host / Ig Isotype	Mouse / IgG2b, kappa
Mol. Weight of Antigen	52kDa
Cellular Localization	Cytoplasm.
Species Reactivity	Human, Cat, Dog, Horse and Cow.
Positive Control	SJRH30 cells. Human uterus, small intestine or leiomyosarcoma.



SDS-PAGE Analysis Purified Desmin Mouse Monoclonal Antibody (DES/3255). Confirmation of Purity and Integrity of Antibody.



Specificity & Comments

Cytoskeletal intermediate filaments (IFs) constitute a diverse group of proteins that are expressed in a highly tissue-specific manner. IFs are constructed from two-chain 1 \pm -helical coiled-coil molecules arranged on an imperfect helical lattice, and have been widely used as markers for distinguishing individual cell types within a tissue and identifying the origins of metastatic tumors. Vimentin is an IF general marker of cells originating in the mesenchyme. Vimentin and Desmin, a related class III IF, are both expressed during skeletal muscle development. Desmin, a 469 amino acid protein found near the Z line in sarcomeres, is expressed more frequently in adult differentiated state tissues. Anti-desmin detects cells of normal smooth, skeletal, and cardiac muscles. Antibody reacts with leiomyomas, leiomyosarcoma, rhabdomyomas, rhabdomyosarcoma, and perivascular cells of glomus tumors of the skin.

Known Applications & Suggested Dilutions

Immunohistochemistry (Formalin-fixed) (1-2ug/ml for 30 minutes at RT) (Staining of formalin-fixed tissues requires heating tissue sections in 10mM Tris with 1mM EDTA, pH 9.0, for 45 min at 95 \pm degC followed by cooling at RT for 20 minutes)
Optimal dilution for a specific application should be determined.

Key References

Supplied As

200ug/ml of Ab purified from Bioreactor Concentrate by Protein A/G. Prepared in 10mM PBS with 0.05% BSA & 0.05% azide. Also available WITHOUT BSA & azide at 1.0mg/ml.

Storage and Stability

Antibody with azide - store at 2 to 8 \circ C. Antibody without azide - store at -20 to -80 \circ C. Antibody is stable for 24 months. Non-hazardous. No MSDS required.

Limitations

This antibody is available for research use only and is not approved for use in diagnosis.

Warranty

There are no warranties, expressed or implied, which extend beyond this description. Company is not liable for any personal injury or economic loss resulting from this product.