

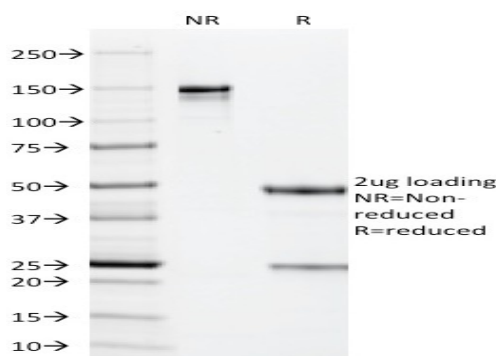
## Cytomegalovirus p65 (CMV-p65)

### Mouse Monoclonal Antibody [Clone CMV101]

Catalog No	Format	Size	Price (USD)
MSM2-101-P0	Purified Ab with BSA and Azide at 200ug/ml	20 ug	219.00
MSM2-101-P1	Purified Ab with BSA and Azide at 200ug/ml	100 ug	499.00
MSM2-101-P1ABX	Purified Ab WITHOUT BSA at 1.0mg/ml	100 ug	499.00

Human Entrez Gene ID	Not Applicable
Human SwissProt	Not Applicable
Human Unigene	Not Applicable
Human Gene Symbol	Not Applicable
Human Chromosome Location	Not Applicable
Synonyms	Not Known

Immunogen	Recombinant CMV-p65 protein
Host / Ig Isotype	Mouse / IgG1, kappa
Mol. Weight of Antigen	65kDa
Cellular Localization	Nuclear
Species Reactivity	CMV.
Positive Control	CMV-infected cells. Tissues.



SDS-PAGE Analysis Purified CMV-p65 Mouse Monoclonal Antibody (CMV101). Confirmation of Purity and Integrity of Antibody.

#### Specificity & Comments

Ten to forty percent of the patients with acquired immunodeficiency syndrome (AIDS) develop cytomegalovirus (CMV) infections. In some patients with AIDS, CMV is detected in the bronchoalveolar lavage fluid (BALF), urine, and other specimens, even when there are no symptoms of CMV disease. An indicator of active CMV infection is needed to facilitate the diagnosis of CMV disease in patients with AIDS or HIV infection. CMV p65 antigen was detected in the leukocytes of both the peripheral blood and BALF during the early phase of CMV disease.

#### Known Applications & Suggested Dilutions

ELISA (For coating, order Ab without BSA)  
Immunocytochemistry (Acetone or paraformaldehyde fixed) (1-2ug/ml for 30 min)  
Immunofluorescence (1-2ug/ml)  
Optimal dilution for a specific application should be determined.

#### Key References

- Hanabusa H, Matsuda F, Tanaka Y, Uesugi T, Ota T, Sato T, Nomori H, Minematsu T, Minamishima Y, Mori R. Detection of cytomegalovirus (CMV) antigen for rapid diagnosis and monitoring of CMV diseases in AIDS. [Article in Japanese] Kansenshogaku Zasshi. 1994;68(9):1105-12.

#### Supplied As

200ug/ml of Ab Purified from Bioreactor Concentrate by Protein A/G. Prepared in 10mM PBS with 0.05% BSA & 0.05% azide. Also available WITHOUT BSA at 1.0mg/ml.

#### Storage and Stability

Antibody with azide - store at 2 to 8°C. Antibody is stable for 24 months. Non-hazardous. No MSDS required.

#### Limitations

This antibody is available for research use only and is not approved for use in diagnosis.

#### Warranty

There are no warranties, expressed or implied, which extend beyond this description. Company is not liable for any personal injury or economic loss resulting from this product.