

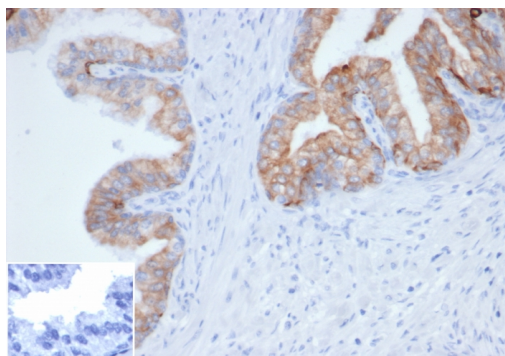
Cytokeratin, pan (Epithelial Marker)

Recombinant Rabbit Monoclonal Antibody [Clone Cocktail PCK/4933R]

Catalog No	Format	Size	Price (USD)
RBM43-4933-P0	Purified Ab with BSA and Azide at 200ug/ml	20 ug	219.00
RBM43-4933-P1	Purified Ab with BSA and Azide at 200ug/ml	100 ug	499.00
RBM43-4933-P1ABX	Purified Ab WITHOUT BSA and Azide at 1.0mg/ml	100 ug	499.00

Human Entrez Gene ID	Multiple
Human SwissProt	Multiple
Human Unigene	Multiple
Human Gene Symbol	KRT
Human Chromosome Location	Multiple
Synonyms	KRT1B; Keratin, type II cytoskeletal 1b; K77; CK-1B; Keratin 1B; Keratin-77; Cytokeratin-1B; Type-II Keratin Kb39

Immunogen	Crude cytokeratin extract prepared from RT-4 and MCF-7 cells.
Host / Ig Isotype	Rabbit / IgG
Mol. Weight of Antigen	40-67kDa (Multiple)
Cellular Localization	Cytoplasmic
Species Reactivity	Human.
Positive Control	Skin, adeno- or squamous carcinomas (IHC).



Formalin-fixed, paraffin-embedded human prostate stained with Pan-Cytokeratin Recombinant Rabbit Monoclonal Antibody (PCK/4933R). Inset: PBS instead of primary antibody, secondary control.

Specificity & Comments

PCK/4933R demonstrates a broad spectrum of cytokeratin reactivity. In normal tissues, PCK/4933R is reactive with most epithelial types, including bile ducts and hepatocytes in liver, bladder epithelium, breast ducts, bronchial epithelium, endometrium, intestinal epithelium of stomach, duodenum, ileum, colon, rectum, pancreas, ovarian epithelium, pancreatic acini, pituitary acini, pneumocytes, prostate, thyroid, skin (positive on the basal layer and negative on the superficial layers of squamous epithelium), and apocrine and sweat glands. In tumors, PCK/4933R is reactive with most carcinomas, including breast, transitional cell (TCC), renal cell (RCC), lung adenocarcinoma, lung small cell, lung squamous cell, endometrial, prostate, ovarian, hepatocellular (HCC), colorectal CA, stomach and thyroid. It is negative in certain normal tissues, including brain, lymphocytes and all cells of hematolymphoid origin, muscle, brain, nerves, endothelium and in certain tumors including most melanomas, sarcomas, lymphomas, primitive neuroectodermal tumors (PNET)/Ewings and gastrointestinal stromal tumors (GIST). Positivity has been seen on some dendritic cells in lymph nodes, some endothelia, and some muscle cells.

Known Applications & Suggested Dilutions

Immunohistochemistry (Formalin-fixed) (1-2ug/ml for 30 minutes at RT) (Staining of formalin-fixed tissues requires heating tissue sections in 10mM Tris with 1mM EDTA, pH 9.0, for 45 min at 95 °C followed by cooling at RT for 20 minutes) Optimal dilution for a specific application should be determined.

Key References

1. Battifora H, Am J Surg Pathol. 1988;12:24Gown AM, et al. Am J Clin Pathol. 1985;84:413

Supplied As

200ug/ml of Ab purified from Bioreactor Concentrate by Protein A/G. Prepared in 10mM PBS with 0.05% BSA & 0.05% azide. Also available WITHOUT BSA & azide at 1.0mg/ml.

Storage and Stability

Antibody with azide - store at 2 to 8 °C. Antibody without azide - store at -20 to -80 °C. Antibody is stable for 24 months. Non-hazardous. No MSDS required.

Limitations

This antibody is available for research use only and is not approved for use in diagnosis.

Warranty

There are no warranties, expressed or implied, which extend beyond this description. Company is not liable for any personal injury or economic loss resulting from this product.