

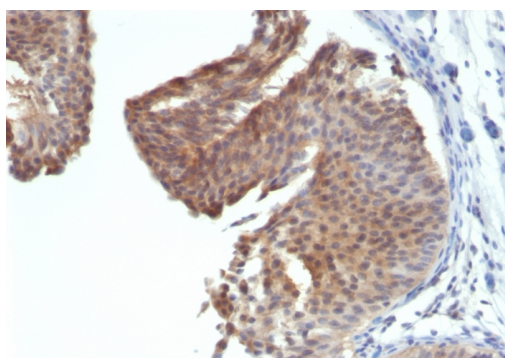
Cytokeratin 6 (KRT6) (Basal Cell Marker)

Mouse Monoclonal Antibody [Clone KRT6/1702]

Catalog No	Format	Size	Price (USD)
3853-MSM2-P0	Purified Ab with BSA and Azide at 200ug/ml	20 ug	219.00
3853-MSM2-P1	Purified Ab with BSA and Azide at 200ug/ml	100 ug	499.00
3853-MSM2-P1ABX	Purified Ab WITHOUT BSA and Azide at 1.0mg/ml	100 ug	499.00

Human Entrez Gene ID	3853; 3854; 286887
Human SwissProt	P02538; P04259; P48668
Human Unigene	700779
Human Gene Symbol	KRT6A; KRT6B; KRT6C
Human Chromosome Location	12q13.13; 12q13.13; 12q13.13
Synonyms	CK6A, CK6B, CK6C, CK6D, CK6E, Keratin Type II Cytoskeletal 6A, Keratin Type II Cytoskeletal 6B, Keratin Type II Cytoskeletal 6C, Keratin Type II Cytoskeletal 6D, Keratin Type II Cytoskeletal 6E, KRT6, KRT6A, KRT6B, KRT6C, KRT6D, KRT6E

Immunogen	Recombinant human keratin 6 protein
Host / Ig Isotype	Mouse / IgG2a, kappa
Mol. Weight of Antigen	56kDa
Cellular Localization	Cytoplasmic
Species Reactivity	Human. Mouse.
Positive Control	Tonsil or basal cell carcinoma.



Formalin-fixed, paraffin-embedded Human Bladder Carcinoma stained with Cytokeratin 6 Monoclonal Antibody (KRT6/1702)

Specificity & Comments

This MAbs recognizes a protein of 56kDa, identified as cytokeratin 6 (CK6). In humans, multiple isoforms of Cytokeratin 6 (6A-6F), encoded by several highly homologous genes, have distinct tissue expression patterns, and Cytokeratin 6A is the dominant form in epithelial tissue. The gene encoding human Cytokeratin 6A maps to chromosome 12q13, and mutations in this gene are linked to several inheritable hair and skin pathologies. Keratins 6 and 16 are expressed in keratinocytes, which are undergoing rapid turnover in the suprabasal region (also known as hyper-proliferation-related keratins). Keratin 6 is found in hair follicles, suprabasal cells of a variety of internal stratified epithelia, in epidermis, in both normal and hyper-proliferative situations. Epidermal injury results in activation of keratinocytes, which express CK6 and CK16. CK6 is strongly expressed in about 75% of head and neck squamous cell carcinomas. Expression of CK6 is particularly associated with differentiation.

Known Applications & Suggested Dilutions

Immunohistochemistry (Formalin-fixed) (0.1-0.2ug/ml for 30 min at RT)(Staining of formalin-fixed tissues requires heating tissue sections in 10mM Tris with 1mM EDTA, pH 9.0, for 45 min at 95degC followed by cooling at RT for 20 minutes)
Optimal dilution for a specific application should be determined.

Key References

1. Wetzels RH, et. al. American Journal of Pathology, 1991, 138(3):751-63.

Supplied As

200ug/ml of Ab Purified from Bioreactor Concentrate by Protein A/G. Prepared in 10mM PBS with 0.05% BSA & 0.05% azide. Also available WITHOUT BSA & azide at 1.0mg/ml.

Storage and Stability

Antibody with azide - store at 2 to 8°C. Antibody without azide - store at -20 to -80°C. Antibody is stable for 24 months. Non-hazardous. No MSDS required.

Limitations

This antibody is available for research use only and is not approved for use in diagnosis.

Warranty

There are no warranties, expressed or implied, which extend beyond this description. Company is not liable for any personal injury or economic loss resulting from this product.