

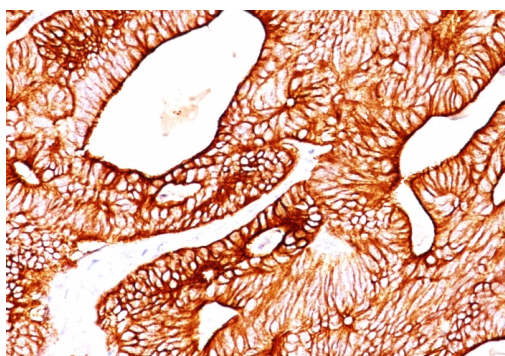
Cytokeratin 5/8

Mouse Monoclonal Antibody [Clone SPM268]

| Catalog No | Format | Size | Price (USD) |
|------------------|---|--------|-------------|
| MSM13X-948-P0 | Purified Ab with BSA and Azide at 200ug/ml | 20 ug | 219.00 |
| MSM13X-948-P1 | Purified Ab with BSA and Azide at 200ug/ml | 100 ug | 499.00 |
| MSM13X-948-P1ABX | Purified Ab WITHOUT BSA and Azide at 1.0mg/ml | 100 ug | 499.00 |

| | |
|---------------------------|--|
| Human Entrez Gene ID | 3852; 3856 |
| Human SwissProt | P13647 ; P05787 |
| Human Unigene | 433845 ; 533782; 708445 |
| Human Gene Symbol | KRT5 & KRT8 |
| Human Chromosome Location | 12q13.13 (CK5) & 17q21.2 (CK8) |
| Synonyms | CK5; DDD; EBS2; Epidermolysis bullosa simplex 2 Dowling-Meara/Kobner/Weber-Cockayne Types; K5; Keratin complex 2, basic, Gene 5; Keratin Type II Cytoskeletal 5; Keratin-5; KRT5; KRT5A; Type II Cytoskeletal 5; Type-II Keratin Kb5, CK8; CARD2; CYK8; CYKER; Cytokeratin Endo A; DreK8; EndoA; K2C8; K8; Keratin 8; Krt 2.8; KRT8; Type-II Keratin Kb8 |

| | |
|------------------------|---|
| Immunogen | Cytoskeletal preparation from HeLa cells |
| Host / Ig Isotype | Mouse / IgG1, kappa |
| Mol. Weight of Antigen | 58kDa (CK5); 52.5kDa (CK8) |
| Cellular Localization | Cytoplasmic |
| Species Reactivity | Human, Pig, Mouse, Rat, Hamster, Cow, Dog, Sheep, Ferret. Does not react with Chicken or Xenopus. |
| Positive Control | HepG2 or A431 cells. Skin or Squamous cell carcinoma. |



Formalin-fixed, paraffin-embedded human Colon Carcinoma stained with Cytokeratin 5/8 Monoclonal Antibody (SPM268).

Specificity & Comments

It reacts with keratin 5 (58kDa) and keratin 8 (52.5kDa). Simple epithelia express cytokeratin 8 in combination with 18. On the other hand, basal cells of stratified epithelia express cytokeratin 5 paired with 14. This antibody therefore, reacts with a wide range of epithelia and their carcinomas.

Known Applications & Suggested Dilutions

Flow Cytometry (1-2ug/million cells)
Immunofluorescence (1-2ug/ml)
Western Blot (1-2ug/ml)
Immunohistochemistry (Formalin-fixed) (1-2ug/ml for 30 min at RT)(For staining of formalin-fixed tissues, digest sections with trypsin at 1mg/ml PBS, 15 min at RT)Optimal dilution for a specific application should be determined.

Key References

1. Bartek et al. J. of Pathology 164, 215-24 (1991).
2. Vojtek et al. Folia Biol. 37(3-4): 197-206 (1991).
3. Bartkova et al. Neoplasma 38(4), 439-46 (1991).
4. Kovaik et al. J. Tumor Marker Oncol. 5, 219 (1990).

Supplied As

0.5 ml at 200 g/ml of antibody Purified from Bioreactor Concentrate by Protein A/G chromatography. Supplied in 10mM PBS, pH 7.4 with 0.05% BSA and 0.05% sodium azide. Contact us if you require this antibody in a different format.

Storage and Stability

Store at 2 to 8°C. Antibody is stable for 24 months.

Limitations

This antibody is available for research use only and is not approved for use in diagnosis.

Warranty

There are no warranties, expressed or implied, which extend beyond this description. Company is not liable for any personal injury or economic loss resulting from this product.