

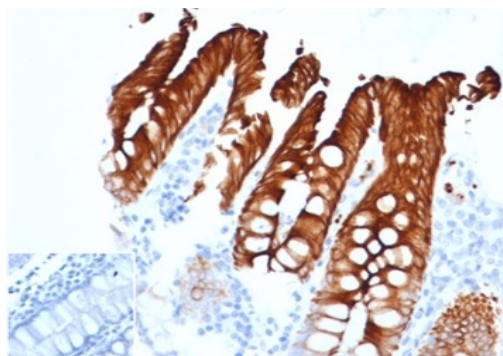
Cytokeratin 20 (KRT20) (Colorectal Epithelial Marker)

Recombinant Rabbit Monoclonal Antibody [Clone KRT20/4879R]

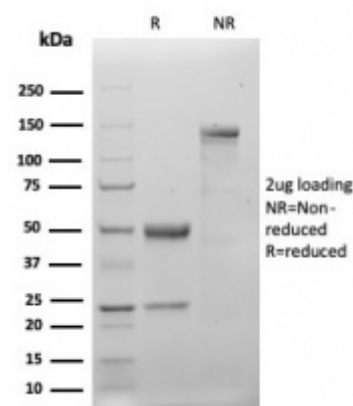
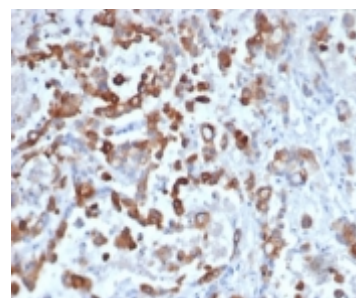
Catalog No	Format	Size	Price (USD)
54474-RBM9-P0	Purified Ab with BSA and Azide at 200ug/ml	20 ug	219.00
54474-RBM9-P1	Purified Ab with BSA and Azide at 200ug/ml	100 ug	499.00
54474-RBM9-P1ABX	Purified Ab WITHOUT BSA and Azide at 1.0mg/ml	100 ug	499.00

Human Entrez Gene ID	54474
Human SwissProt	P35900
Human Unigene	84905
Human Gene Symbol	KRT20
Human Chromosome Location	17q21.2
Synonyms	CK20; Cytokeratin-20; K20; KA20; Keratin 20; keratin 20, type I; Keratin type I cytoskeletal 20; Keratin-20; KRT20

Immunogen	Recombinant fragment of human KRT20 protein (around aa 196-323) (exact sequence is proprietary)
Host / Ig Isotype	Rabbit / IgG, kappa
Mol. Weight of Antigen	46kDa
Cellular Localization	Cytoplasmic
Species Reactivity	Human.
Positive Control	HT29 cells. Human colon or prostate carcinoma.



IHC analysis of formalin-fixed, paraffin-embedded human brain. Stained with OLIG2/6695R at 2ug/ml in PBS for 30min RT. Inset: PBS instead of primary; secondary antibody negative control.



Specificity & Comments

This MAb recognizes an intermediate filament protein of 46kDa, identified as cytokeratin 20 (KRT20). KRT20 is abundantly expressed in goblet cells and enterocytes of the gastrointestinal tract. It is a useful marker of pancreatic and colorectal cancer. KRT20 is expressed under normal, hyperplastic and neoplastic conditions. It has been detected in adenocarcinomas of the colon, stomach and biliary tract. Breast carcinomas are generally non-reactive.

Known Applications & Suggested Dilutions

Immunohistochemistry (Formalin-fixed) (1-2ug/ml for 30 minutes at RT) (Staining of formalin-fixed tissues requires heating tissue sections in 10mM Tris with 1mM EDTA, pH 9.0, for 45 min at 95 °C followed by cooling at RT for 20 minutes)
Optimal dilution for a specific application should be determined.

Key References

- Moll, R., et al. 1993. Differentiation 53: 75-93.
- Wauters, C.C., et al. 1995. Hum. Pathol. 26: 852-855.

Supplied As

200ug/ml of Ab purified from Bioreactor Concentrate by Protein A/G. Prepared in 10mM PBS with 0.05% BSA & 0.05% azide. Also available WITHOUT BSA & azide at 1.0mg/ml.

Storage and Stability

Antibody with azide - store at 2 to 8 °C. Antibody without azide - store at -20 to -80 °C. Antibody is stable for 24 months. Non-hazardous. No MSDS required.

Limitations

This antibody is available for research use only and is not approved for use in diagnosis.

Warranty

There are no warranties, expressed or implied, which extend beyond this description. Company is not liable for any personal injury or economic loss resulting from this product.