

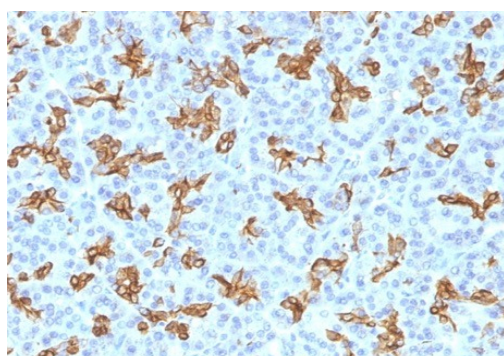
Cytokeratin 19 (Pancreatic Stem Cell Marker)

Mouse Monoclonal Antibody [Clone KRT19/800]

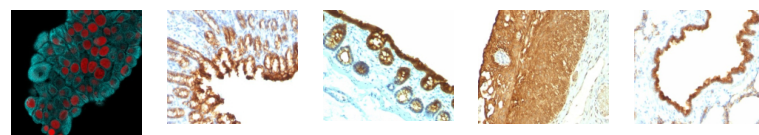
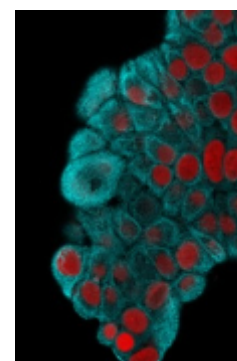
Catalog No	Format	Size	Price (USD)
3880-MSM5-P0	Purified Ab with BSA and Azide at 200ug/ml	20 ug	219.00
3880-MSM5-P1	Purified Ab with BSA and Azide at 200ug/ml	100 ug	499.00
3880-MSM5-P1ABX	Purified Ab WITHOUT BSA and Azide at 1.0mg/ml	100 ug	499.00

Human Entrez Gene ID	3880
Human SwissProt	P08727Human
Human Unigene	654568
Human Gene Symbol	KRT19
Human Chromosome Location	17q21.2
Synonyms	k19; k1cs; Keratin 19 Keratin Type i 40kD; KRT19

Immunogen	Recombinant full-length human KRT19 protein.
Host / Ig Isotype	Mouse / IgG1, kappa
Mol. Weight of Antigen	40kDa
Cellular Localization	Cytoplasm
Species Reactivity	Human, Mouse and Rat.
Positive Control	MCF-7 or HeLa cells. Breast cancer tissues.



Formalin-fixed, paraffin-embedded human pancreas stained with Cytokeratin 19 Mouse Monoclonal Antibody (KRT19/800).



Specificity & Comments

Recognizes a protein of 40kDa, identified as cytokeratin-19 (CK19), which is expressed in sweat gland, mammary gland ductal and secretory cells, bile ducts, gastrointestinal tract, bladder urothelium, oral epithelia, esophagus, and ectocervical epithelium. Anti-CK19 reacts with a wide variety of epithelial malignancies including adenocarcinomas of the colon, stomach, pancreas, biliary tract, liver, and breast. Perhaps the most useful application is the identification of thyroid carcinoma of the papillary type, although 50%-60% of follicular carcinomas are also labeled. Anti-CK19 is a useful marker for detection of tumor cells in lymph nodes, peripheral blood, bone marrow and breast cancer.

Known Applications & Suggested Dilutions

Flow Cytometry (0.5-1ug/million cells)
Immunofluorescence (1-2ug/ml)
Western Blot (1-2ug/ml)
Immunohistochemistry (Formalin-fixed) (1-2ug/ml for 30 minutes at RT)
(Staining of formalin-fixed tissues requires heating tissue sections in 10mM Tris with 1mM EDTA, pH 9.0, for 45 min at 95°C followed by cooling at RT for 20 minutes)
Optimal dilution for a specific application should be determined.

Key References

1. Van Eyken, P., et al. 1991. Immunocytochemistry of cytokeratins in primary human liver tumors. APMIS Suppl. 23: 77-85.
2. van der Velden, L.A., et al. 1993. Cytokeratin expression in normal and (pre)malignant head and neck epithelia: an overview. Head Neck 15: 133-146.

Supplied As

200ug/ml of Ab purified from Bioreactor Concentrate by Protein A/G. Prepared in 10mM PBS with 0.05% BSA & 0.05% azide. Also available WITHOUT BSA & azide at 1.0mg/ml.

Storage and Stability

Antibody with azide - store at 2 to 8°C. Antibody without azide - store at -20 to -80°C. Antibody is stable for 24 months. Non-hazardous. No MSDS required.

Limitations

This antibody is available for research use only and is not approved for use in diagnosis.

Warranty

There are no warranties, expressed or implied, which extend beyond this description. Company is not liable for any personal injury or economic loss resulting from this product.