

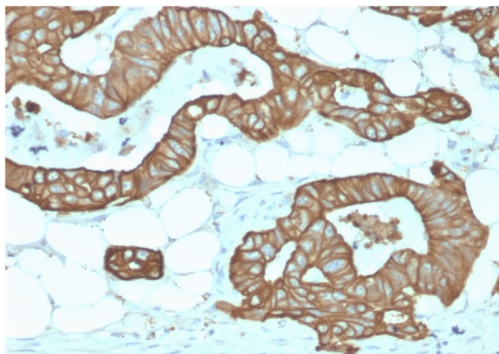
Cytokeratin 19 (KRT19) (Pancreatic Stem Cell Marker)

Recombinant Rabbit Monoclonal Antibody [Clone KRT19/1959R]

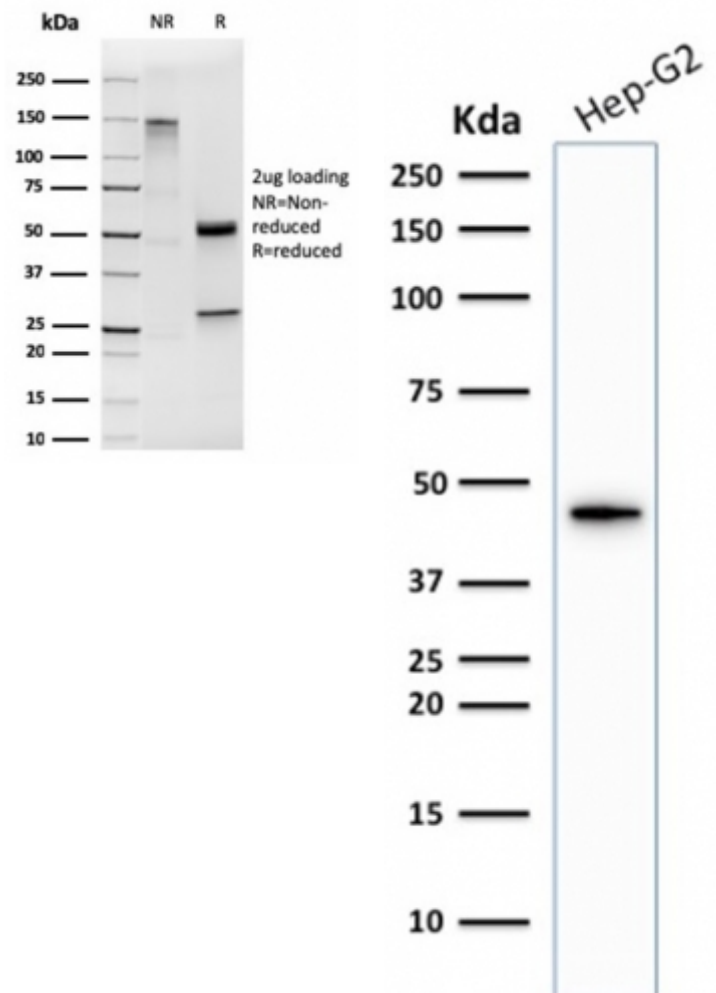
| Catalog No | Format | Size | Price (USD) |
|-----------------|---|--------|-------------|
| 3880-RBM9-P0 | Purified Ab with BSA and Azide at 200ug/ml | 20 ug | 219.00 |
| 3880-RBM9-P1 | Purified Ab with BSA and Azide at 200ug/ml | 100 ug | 499.00 |
| 3880-RBM9-P1ABX | Purified Ab WITHOUT BSA and Azide at 1.0mg/ml | 100 ug | 499.00 |

| | |
|---------------------------|--|
| Human Entrez Gene ID | 3880 |
| Human SwissProt | P08727 |
| Human Unigene | 654568 |
| Human Gene Symbol | KRT19 |
| Human Chromosome Location | 17q21.2 |
| Synonyms | k19; k1cs; Keratin 19 Keratin Type i 40kD; krt19 |

| | |
|------------------------|---|
| Immunogen | Recombinant human full-length KRT19 protein |
| Host / Ig Isotype | Rabbit / IgG |
| Mol. Weight of Antigen | 40kDa |
| Cellular Localization | Cytoplasmic |
| Species Reactivity | Human. Mouse. |
| Positive Control | Hep-G2; MCF-7, HeLa cells, Breast Cancer. |



Formalin-fixed, paraffin-embedded human Colon stained with Cytokeratin 19 Rabbit Recombinant Monoclonal Antibody (KRT19/1959R).



Specificity & Comments

This Ab reacts with the rod domain of human cytokeratin 19 (CK19), a polypeptide of 40kDa. CK19 is expressed in sweat gland, mammary gland ductal and secretory cells, bile ducts, gastrointestinal tract, bladder urothelium, oral epithelia, esophagus, and ectocervical epithelium. Anti-CK19 reacts with a wide variety of epithelial malignancies including adenocarcinomas of the colon, stomach, pancreas, biliary tract, liver, and breast. Perhaps the most useful application is the identification of thyroid carcinoma of the papillary type, although 50%-60% of follicular carcinomas are also labeled. Anti-CK19 is a useful marker for detection of tumor cells in lymph nodes, peripheral blood, bone marrow and breast cancer.

Known Applications & Suggested Dilutions

Western Blot (1-2ug/ml)

Immunohistochemistry (Formalin-fixed) (1-2ug/ml for 30 min at RT),(Staining of formalin-fixed tissues requires heating tissue sections in 10mM Tris with 1mM EDTA, pH 9.0, for 45 min at 95°C followed by cooling at RT for 20 minutes)

Optimal dilution for a specific application should be determined.

Key References

1. Lewis BC et. al. Genes Dev 17:3127-38 (2003).
2. Bartek J et. al. Int J Cancer 36:299-306 (1985).
3. Nightingale J et. al. J Am SocNephrol 15:21-32 (2004).
4. Bartek J et. al. J Cell Sci 75:17-33 (1985)

Supplied As

200ug/ml of Ab Purified from Bioreactor Concentrate by Protein A/G. Prepared in 10mM PBS with 0.05% BSA & 0.05% azide. Also available WITHOUT BSA & azide at 1.0mg/ml.

Storage and Stability

Antibody with azide - store at 2 to 8°C. Antibody without azide - store at -20 to -80°C. Antibody is stable for 24 months. Non-hazardous. No MSDS required.

Limitations

This antibody is available for research use only and is not approved for use in diagnosis.

Warranty

There are no warranties, expressed or implied, which extend beyond this description. Company is not liable for any personal injury or economic loss resulting from this product.