

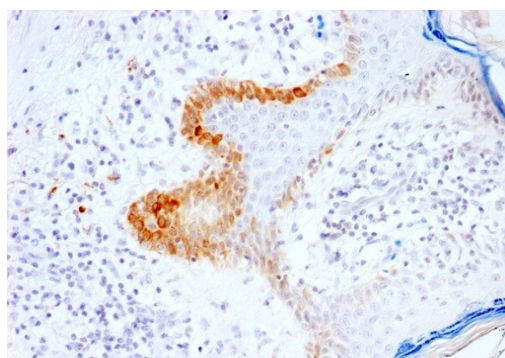
## Cytokeratin 15 (Esophageal Squamous Cell Carcinoma Marker)

Recombinant Rabbit Monoclonal Antibody [Clone KRT15/2103R]

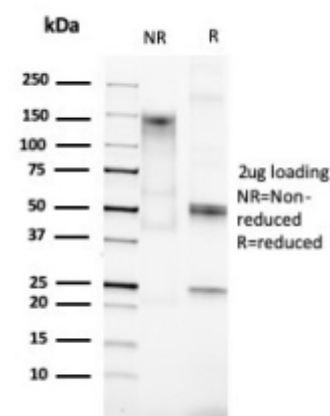
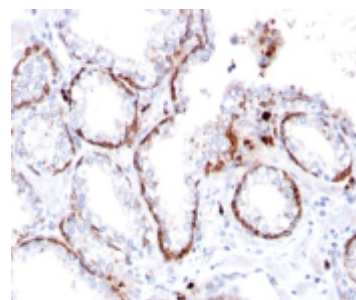
Catalog No	Format	Size	Price (USD)
3866-RBM3-P0	Purified Ab with BSA and Azide at 200ug/ml	20 ug	219.00
3866-RBM3-P1	Purified Ab with BSA and Azide at 200ug/ml	100 ug	499.00
3866-RBM3-P1ABX	Purified Ab WITHOUT BSA and Azide at 1.0mg/ml	100 ug	499.00

Human Entrez Gene ID	3866
Human SwissProt	P19012Human
Human Unigene	654570
Human Gene Symbol	KRT15
Human Chromosome Location	17q21.2
Synonyms	CK15; Cytokeratin 15; K1CO; Ka15; Keratin 15 basic; Keratin 15 beta; Keratin complex 1 acidic gene 15; Keratin type I cytoskeletal 15; KRT15; KRTB; KRTL15; Type I cytoskeletal 15; Type I keratin Ka15

Immunogen	Recombinant human full-length KRT15 protein
Host / Ig Isotype	Rabbit / IgG, kappa
Mol. Weight of Antigen	52kDa
Cellular Localization	Cytoplasm.
Species Reactivity	Human. Rat. Cow.
Positive Control	HeLa, A431 cells. Human skin or colon.



Formalin-fixed, paraffin-embedded human skin stained with Cytokeratin 15 Rabbit Recombinant Monoclonal Antibody (KRT15/2103R).



### Specificity & Comments

Keratin 15 is a type I keratin which is expressed only in basal keratinocytes in stratified epithelia and does not appear to have a natural type II expression partner. KRT15 is downregulated in activated keratinocytes. It is a specific marker of stem cells of the hair-follicle bulge and may be a useful marker for diagnosis between basal cell carcinoma (BCC) and trichoepithelioma. Trichoblastoma are benign neoplasms of follicular differentiation frequently found in nevus sebaceous. Many morphologic features are shared with nodular basal cell carcinoma, sometimes rendering a diagnosis difficult. Trichoblastoma and BCC show variable expression of Cytokeratin 15 and Cytokeratin 19, and absence of hair keratins.

### Known Applications & Suggested Dilutions

Flow Cytometry (1-2ug/million cells)  
Immunohistochemistry (Formalin-fixed) (1-2ug/ml for 30 minutes at RT)  
(Staining of formalin-fixed tissues requires heating tissue sections in 10mM Tris with 1mM EDTA, pH 9.0, for 45 min at 95degC followed by cooling at RT for 20 minutes)  
Optimal dilution for a specific application should be determined.

### Key References

1. Yu-Hong Shen, et al. Asian Pac J Cancer Prev, 17 (9), 4217-4222.

### Supplied As

200ug/ml of Ab purified by Protein A Column. Prepared in 10mM PBS with 0.05% BSA & 0.05% azide. Also available WITHOUT BSA & azide at 1.0mg/ml.

### Storage and Stability

Antibody with azide - store at 2 to 8°C. Antibody without azide - store at -20 to -80°C. Antibody is stable for 24 months. Non-hazardous. No MSDS required.

### Limitations

This antibody is available for research use only and is not approved for use in diagnosis.

### Warranty

There are no warranties, expressed or implied, which extend beyond this description. Company is not liable for any personal injury or economic loss resulting from this product.