

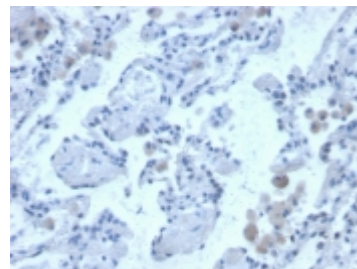
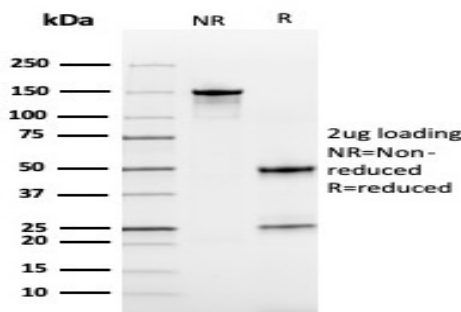
## Cystatin B (Marker of Epithelial Ovarian Cancer Progression)

Mouse Monoclonal Antibody [Clone CPTC-CSTB-3]

Catalog No	Format	Size	Price (USD)
1476-MSM1-P0	Purified Ab with BSA and Azide at 200ug/ml	20 ug	219.00
1476-MSM1-P1	Purified Ab with BSA and Azide at 200ug/ml	100 ug	499.00
1476-MSM1-P1ABX	Purified Ab WITHOUT BSA and Azide at 1.0mg/ml	100 ug	499.00

Human Entrez Gene ID	1476
Human SwissProt	P04080
Human Unigene	695
Human Gene Symbol	CSTB
Human Chromosome Location	21q22.3
Synonyms	CHROW21; CPI-B; CST 6; CSTB; CYTB; Stefin B; EPM1; Liver thiol proteinase inhibitor; PME; STFB; ULD

Immunogen	Recombinant full-length human Cystatin B protein
Host / Ig Isotype	Mouse / IgG1, kappa
Mol. Weight of Antigen	12kDa
Cellular Localization	Cytoplasm and nucleus.
Species Reactivity	Human.
Positive Control	HEK293T or U-87 MG cells. Human tonsil.



SDS-PAGE Analysis Purified Cystatin B Mouse Monoclonal Antibody (CPTC-CSTB-3). Confirmation of Purity and Integrity of Antibody.

### Specificity & Comments

Cystatin A (also designated STF1, STFA, stefin A or cystatin AS) and cystatin B (also designated PME, CST6, STFB, CPI-B, stefin B and liver thiol proteinase inhibitor) are thiol protease inhibitors that form complexes with papain and the cathepsins B, H, and L. cystatin A, a cytoplasmic protein, is one of the precursor proteins of the cornified cell envelope in keratinocytes and plays a role in epidermal development and maintenance. cystatin B protects against intracellular proteases leaking out of lysosomes and is primarily expressed in heart, liver and kidney.

### Known Applications & Suggested Dilutions

Western Blot (1-2ug/ml)  
Immunohistochemistry (Formalin-fixed) (1-2ug/ml for 30 minutes at RT)  
(Staining of formalin-fixed tissues requires heating tissue sections in 10mM Tris with 1mM EDTA, pH 9.0, for 45 min at 95degC followed by cooling at RT for 20 minutes)  
Optimal dilution for a specific application should be determined.

### Key References

- Wang X, et al. Cystatin B is a progression marker of human epithelial ovarian tumors mediated by the TGF- signaling pathway. Int J Oncol. 2014 Apr;44(4):1099-106.

### Supplied As

200ug/ml of Ab purified from Bioreactor Concentrate by Protein A/G. Prepared in 10mM PBS with 0.05% BSA & 0.05% azide. Also available WITHOUT BSA & azide at 1.0mg/ml.

### Storage and Stability

Antibody with azide - store at 2 to 8°C. Antibody without azide - store at -20 to -80°C. Antibody is stable for 24 months. Non-hazardous. No MSDS required.

### Limitations

This antibody is available for research use only and is not approved for use in diagnosis.

### Warranty

There are no warranties, expressed or implied, which extend beyond this description. Company is not liable for any personal injury or economic loss resulting from this product.