

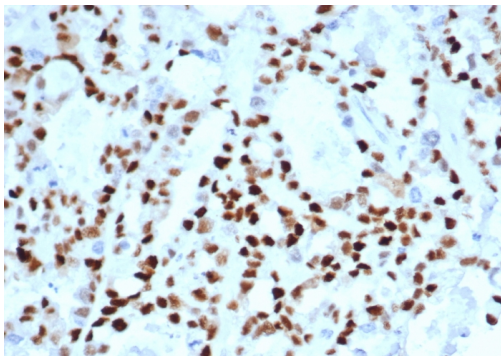
Cyclin E (G1/S-Phase Cyclin)

Recombinant Rabbit Monoclonal Antibody [Clone CCNE1/4935R]

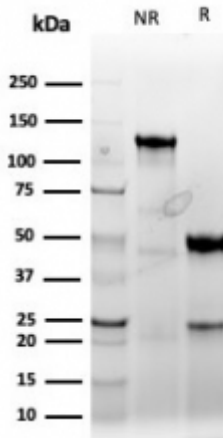
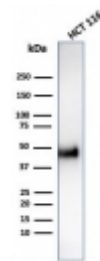
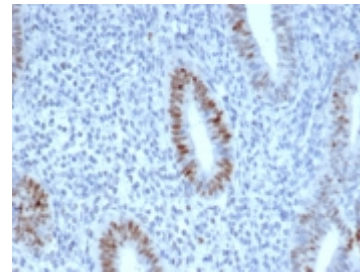
Catalog No	Format	Size	Price (USD)
898-RBM5-P0	Purified Ab with BSA and Azide at 200ug/ml	20 ug	219.00
898-RBM5-P1	Purified Ab with BSA and Azide at 200ug/ml	100 ug	499.00
898-RBM5-P1ABX	Purified Ab WITHOUT BSA and Azide at 1.0mg/ml	100 ug	499.00

Human Entrez Gene ID	898
Human SwissProt	IDP24864
Human Unigene	244723
Human Gene Symbol	CCNE1
Human Chromosome Location	19q12
Synonyms	CCNE1; Cyclin E1; G1/S-specific cyclin-E1

Immunogen	Recombinant human Cyclin E (CCNE1) protein fragment (around aa 10-176) (exact sequence is proprietary)
Host / Ig Isotype	Rabbit / IgG
Mol. Weight of Antigen	53kDa
Cellular Localization	Nuclear
Species Reactivity	Human.
Positive Control	Jurkat, HCT116 or HeLa cells. Human breast or colon carcinoma.



Formalin-fixed, paraffin-embedded human ovarian carcinoma stained with Cyclin E Recombinant Rabbit Monoclonal Antibody (CCNE1/4935R).



Specificity & Comments

Cyclin E belongs to the highly conserved cyclin family, whose members exhibit distinct expression and degradation patterns which contribute to the temporal coordination of each mitotic event. Cyclins function as regulators of CDK kinases. Cyclin E forms a complex with and functions as a regulatory subunit of CDK2, whose activity is required for cell cycle G1/S transition. Cyclin E accumulates at the G1-S phase boundary and is degraded as cells progress through S phase. Cyclin E overexpression has been observed in many tumors, which results in chromosome instability, and thus may contribute to tumorigenesis.

Known Applications & Suggested Dilutions

Western Blot (1-2ug/ml)

Immunohistochemistry (Formalin-fixed) (1-2ug/ml for 30 minutes at RT) (Staining of formalin-fixed tissues requires heating tissue sections in 10mM Tris with 1mM EDTA, pH 9.0, for 45 min at 95 °C followed by cooling at RT for 20 minutes)

Optimal dilution for a specific application should be determined.

Key References

Supplied As

200ug/ml of Ab purified from Bioreactor Concentrate by Protein A/G. Prepared in 10mM PBS with 0.05% BSA & 0.05% azide. Also available WITHOUT BSA & azide at 1.0mg/ml.

Storage and Stability

Antibody with azide - store at 2 to 8 °C. Antibody without azide - store at -20 to -80 °C. Antibody is stable for 24 months. Non-hazardous. No MSDS required.

Limitations

This antibody is available for research use only and is not approved for use in diagnosis.

Warranty

There are no warranties, expressed or implied, which extend beyond this description. Company is not liable for any personal injury or economic loss resulting from this product.