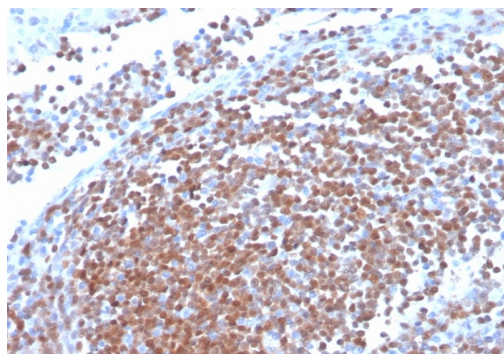


Cyclin D1 (G1-Cyclin & Mantle Cell Lymphoma Marker) Recombinant Rabbit Monoclonal Antibody [Clone CCND1/3370R]

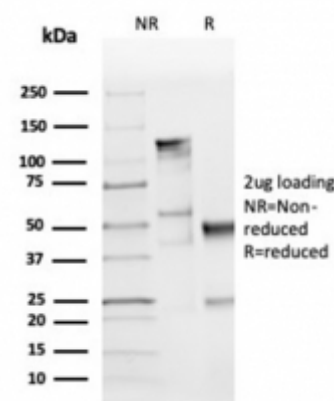
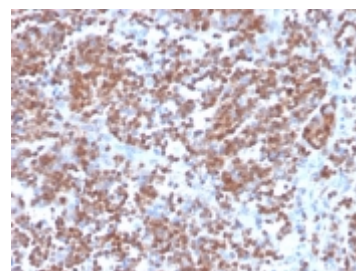
Catalog No	Format	Size	Price (USD)
595-RBM11-P0	Purified Ab with BSA and Azide at 200ug/ml	20 ug	219.00
595-RBM11-P1	Purified Ab with BSA and Azide at 200ug/ml	100 ug	499.00
595-RBM11-P1ABX	Purified Ab WITHOUT BSA and Azide at 1.0mg/ml	100 ug	499.00

Human Entrez Gene ID	595
Human SwissProt	P24385
Human Unigene	523852 & 667996
Human Gene Symbol	CCND1
Human Chromosome Location	11q13.2
Synonyms	B cell CLL/lymphoma 1; B cell leukemia 1; B-cell lymphoma 1 protein; BCL-1 oncogene; CCND1 protein; CCND1/FSTL3 fusion gene; CCND1/IGHG1 fusion gene CCND1/IGLC1 fusion gene; CCND1/PTH fusion gene; G1/S-specific cyclin-D1, Parathyroid adenomatosis 1, PRAD1 oncogene

Immunogen	A synthetic peptide corresponding to residues within aa 270-295 of Cyclin D1
Host / Ig Isotype	Rabbit / IgG
Mol. Weight of Antigen	36kDa
Cellular Localization	Nuclear
Species Reactivity	Human.
Positive Control	Human mantle cell lymphoma, breast or bladder carcinomas.



Formalin-fixed, paraffin-embedded human mantle cell lymphoma stained Cyclin D1 Recombinant Rabbit Monoclonal Antibody (CCND1/3370R).



Specificity & Comments

Recognizes a protein of 36kDa, identified as cyclin D1. Cyclin D1, one of the key cell cycle regulators, is a putative proto-oncogene overexpressed in a wide variety of human neoplasms. This antibody neutralizes the activity of cyclin D1 in vivo. About 60% of mantle cell lymphomas (MCL) contain a t(11; 14)(q13; q32) translocation resulting in over-expression of cyclin D1. This antibody is useful in identifying mantle cell lymphomas (cyclin D1 positive) from CLL/SLL and follicular lymphomas (cyclin D1 negative). Occasionally, hairy cell leukemia and plasma cell myeloma weakly express Cyclin D1.

Known Applications & Suggested Dilutions

Immunohistochemistry (Formalin-fixed) (1-2ug/ml for 30 minutes at RT)
(Staining of formalin-fixed tissues requires heating tissue sections in 10mM Tris with 1mM EDTA, pH 9.0, for 45 min at 95 °C followed by cooling at RT for 20 minutes)
Optimal dilution for a specific application should be determined.

Key References

- Baldin V, et al. Cyclin D1 is a nuclear protein required for cell cycle progression in G1. *Genes and Development*, 1993, 7(5):812-21.

Supplied As

200ug/ml of Ab purified from Bioreactor Concentrate by Protein A/G. Prepared in 10mM PBS with 0.05% BSA & 0.05% azide. Also available WITHOUT BSA & azide at 1.0mg/ml.

Storage and Stability

Antibody with azide - store at 2 to 8 °C. Antibody without azide - store at -20 to -80 °C. Antibody is stable for 24 months. Non-hazardous. No MSDS required.

Limitations

This antibody is available for research use only and is not approved for use in diagnosis.

Warranty

There are no warranties, expressed or implied, which extend beyond this description. Company is not liable for any personal injury or economic loss resulting from this product.