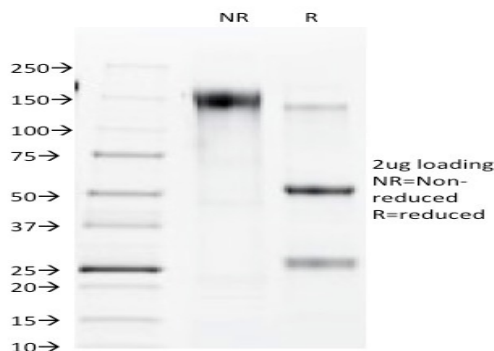


## Connexin 32 (Gap Junction Protein) Rat Monoclonal Antibody [Clone R5.21C]

Catalog No	Format	Size	Price (USD)
MS14618-RTM1-P0	Purified Ab with BSA and Azide at 200ug/ml	20 ug	219.00
MS14618-RTM1-P1	Purified Ab with BSA and Azide at 200ug/ml	100 ug	499.00
MS14618-RTM1-P1ABX	Purified Ab WITHOUT BSA and Azide at 1.0mg/ml	100 ug	499.00

Human Entrez Gene ID	14618
Human SwissProt	P28230
Human Unigene	21198
Human Gene Symbol	Gjb1
Human Chromosome Location	
Synonyms	Charcot Marie Tooth neuropathy X linked; CMTX; CMTX1; Connexin-32; Cx32; GAP junction 28kDa liver protein; Gap junction beta-1 protein; Gap junction protein beta 1 32kD; GJB1

Immunogen	Mouse liver DOC-JR-plasma membranes
Host / Ig Isotype	Rat / IgG2a, kappa
Mol. Weight of Antigen	27-32kDa
Cellular Localization	Cytoplasmic and Cell Surface
Species Reactivity	Mouse, Rat.
Positive Control	MCF-7 cells. Pancreas, Liver, Kidney, Stomach or Tonsil.



SDS-PAGE Analysis Purified Connexin 32 Mouse Monoclonal Antibody (R5.21C). Confirmation of Purity and Integrity of Antibody.

### Specificity & Comments

This Ab recognizes a protein of 27-32kDa, identified as Connexin 32. The connexin family of proteins forms hexameric complexes called 'connexons' that facilitate movement of low molecular weight proteins between cells via gap junctions. Connexin proteins share a common topology of four transmembrane therefore, one connexin usually cannot fully substitute for another.

### Known Applications & Suggested Dilutions

ELISA (For coating use Ab at 1-5ug/ml, order Ab without BSA)  
Optimal dilution for a specific application should be determined.

### Key References

1. J. Cell Biol. 103, 755-766.
2. J. Cell Sci. 116, 3315-3325.
3. Biol. Reprod. 49, 1277-1287.

### Supplied As

200ug/ml of Ab Purified from Bioreactor Concentrate by Protein G. Prepared in 10mM PBS with 0.05% BSA & 0.05% azide. Also available WITHOUT BSA & azide at 1.0mg/ml.

### Storage and Stability

Antibody with azide - store at 2 to 8°C. Antibody without azide - store at -20 to -80°C. Antibody is stable for 24 months. Non-hazardous. No MSDS required.

### Limitations

This antibody is available for research use only and is not approved for use in diagnosis.

### Warranty

There are no warranties, expressed or implied, which extend beyond this description. Company is not liable for any personal injury or economic loss resulting from this product.