

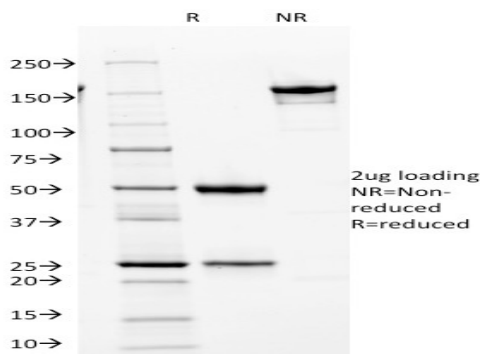
Cdk2 / p34cdc2 Serine-Threonine Kinase

Mouse Monoclonal Antibody [Clone AN4.3]

Catalog No	Format	Size	Price (USD)
1017-MSM1-P0	Purified Ab with BSA and Azide at 200ug/ml	20 ug	219.00
1017-MSM1-P1	Purified Ab with BSA and Azide at 200ug/ml	100 ug	499.00
1017-MSM1-P1ABX	Purified Ab WITHOUT BSA and Azide at 1.0mg/ml	100 ug	499.00

Human Entrez Gene ID	1017
Human SwissProt	P24941
Human Unigene	19192
Human Gene Symbol	CDK2
Human Chromosome Location	12q13.2
Synonyms	Cdc2 related protein kinase; CDC28; CDC2A; CDK1; CDK2; CDKN2; Cell division kinase 2; Cell division protein kinase 2; cyclin dependent kinase 2 alpha; kinase Cdc2; MPF; p33 protein kinase

Immunogen	Recombinant full-length human Cdk2 protein
Host / Ig Isotype	Mouse / IgG2a, kappa
Mol. Weight of Antigen	34kDa
Cellular Localization	Nuclear
Species Reactivity	Human. Mouse. Xenopus.
Positive Control	HeLa cells. HeLa whole cell lysate.



SDS-PAGE Analysis Purified Cdk1 Mouse Monoclonal Antibody (AN4.3).
Confirmation of Integrity and Purity of Antibody.

Specificity & Comments

In vertebrates, as in yeast, multiple cyclins have been identified, including a total of eight such regulatory proteins in mammals. In contrast to the situation in yeast, the Cdc2 p34 kinase is not the only catalytic subunit identified in vertebrates that can interact with cyclins. While Cdc2 p34 is essential for the G2 to M transition in vertebrate cells, a second Cdc2-related kinase has also been implicated in cell cycle control. This protein, designated cyclindependent kinase 2 (Cdk2), also binds to cyclins and its kinase activity is temporally regulated during the cell cycle. Several additional Cdc2-related cyclin dependent kinases have been identified. These include Cdk3, Cdk4, Cdk5, PCTAIRE-1, PCTAIRE-2, PCTAIRE-3, Cdk6 Cdk7, Cdk8 and KIALRE.

Known Applications & Suggested Dilutions

Inhibits activation of p34cdc2 kinase by cyclins
Immunoprecipitation
Kinase Assay
Western Blot
Flow cytometry (1-2ug/ml)
Optimal dilution for a specific application should be determined.

Key References

1. Syafrizayanti et al. 2017. Sci Rep. 7:39756.

Supplied As

200ug/ml of Ab Purified from Bioreactor Concentrate by Protein A/G. Prepared in 10mM PBS with 0.05% BSA & 0.05% azide. Also available WITHOUT BSA & azide at 1.0mg/ml.

Storage and Stability

Antibody with azide - store at 2 to 8°C. Antibody without azide - store at -20 to -80°C. Antibody is stable for 24 months. Non-hazardous. No MSDS required.

Limitations

This antibody is available for research use only and is not approved for use in diagnosis.

Warranty

There are no warranties, expressed or implied, which extend beyond this description. Company is not liable for any personal injury or economic loss resulting from this product.