

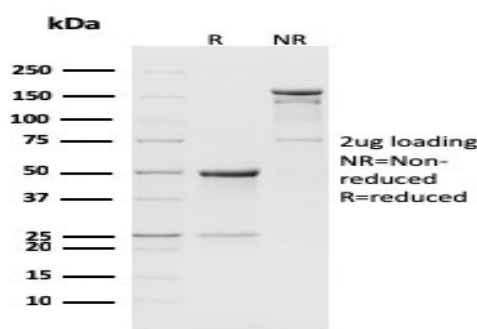
## CD8b, Mouse

Rat Monoclonal Antibody [Clone H35-17.2]

Catalog No	Format	Size	Price (USD)
RTM1-2003-P0	Purified Ab with BSA and Azide at 200ug/ml	20 ug	219.00
RTM1-2003-P1	Purified Ab with BSA and Azide at 200ug/ml	100 ug	499.00
RTM1-2003-P1ABX	Purified Ab WITHOUT BSA and Azide at 1.0mg/ml	100 ug	499.00

Human Entrez Gene ID	12526
Human SwissProt	P10300
Human Unigene	3331
Human Gene Symbol	Cd8b1 (Mouse)
Human Chromosome Location	6 C1; 6 32.14 cM (Mouse)
Synonyms	CD8b antigen; CD8 antigen beta polypeptide 1 (p37); CD8 beta; CD8B1; Leu2; Ly3; LYT3; P37; T lymphocyte surface glycoprotein beta chain; T-cell surface glycoprotein CD8 beta chain

Immunogen	Five day mixed leukocyte culture population, C57BL/6 anti-BALB/c
Host / Ig Isotype	Rat / IgG2b, kappa
Mol. Weight of Antigen	37kDa
Cellular Localization	Cell Surface and Secreted
Species Reactivity	Mouse. Does not react with Human.
Positive Control	MPBMC's or Thymus.



SDS-PAGE Analysis Purified CD8b Rat Monoclonal Antibody (H35-17.2). Confirmation of Integrity and Purity of Antibody.

### Specificity & Comments

This monoclonal antibody reacts with the Mouse CD8 beta molecule. The CD8 beta chain associates with the CD8 alpha chain to form the CD8 alpha/beta heterodimer expressed on the surface of a majority of thymocytes, and on peripheral cytotoxic alpha beta TCR T cells. This monoclonal antibody identifies cytotoxic/suppressor T-cells that interact with MHC class I bearing targets. CD8 is thought to play a role in the process of T-cell mediated killing.

### Known Applications & Suggested Dilutions

Functional Studies (Order Antibody without BSA & Azide)  
Flow Cytometry (0.5-1ug/million cells in 0.1ml)  
Immunofluorescence (1-2ug/ml)  
Optimal dilution for a specific application should be determined.

### Key References

- Bierer BE, Sleckman BP, Ratnoffsky SE, Burakoff SJ. The biologic roles of CD2, CD4, and CD8 in T-cell activation. Annu Rev Immunol. 1989; 7:579-599.
- Fujiura Y, Kawaguchi M, Kondo Y, et al. Development of CD8 alpha alpha+ intestinal intraepithelial T cells in beta 2-microglobulin- and/or TAP1-deficient mice. J Immunol. 1996; 156(8):2710-2715.

### Supplied As

200ug/ml of Ab Purified from Bioreactor Concentrate by Protein A/G. Prepared in 10mM PBS with 0.05% BSA & 0.05% azide. Also available WITHOUT BSA & azide at 1.0mg/ml.

### Storage and Stability

Antibody with azide - store at 2 to 8°C. Antibody without azide - store at -20 to -80°C. Antibody is stable for 24 months. Non-hazardous. No MSDS required.

### Limitations

This antibody is available for research use only and is not approved for use in diagnosis.

### Warranty

There are no warranties, expressed or implied, which extend beyond this description. Company is not liable for any personal injury or economic loss resulting from this product.