

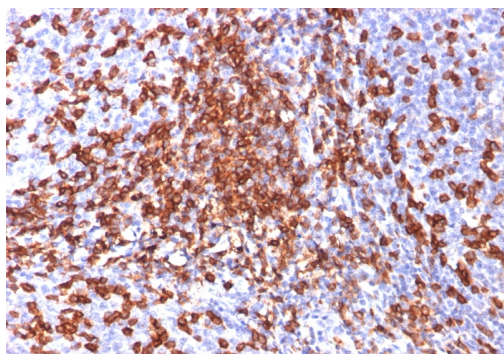
CD44 / HCAM Std. (Cancer Stem Cell Marker)

Mouse Monoclonal Antibody [Clone 156-3C11]

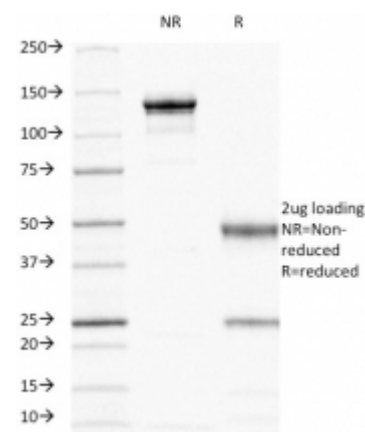
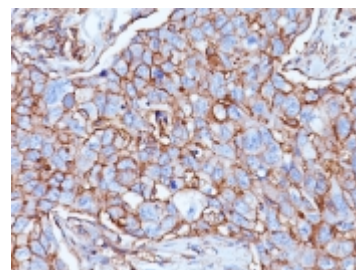
Catalog No	Format	Size	Price (USD)
960-MSM1-P0	Purified Ab with BSA and Azide at 200ug/ml	20 ug	219.00
960-MSM1-P1	Purified Ab with BSA and Azide at 200ug/ml	100 ug	499.00
960-MSM1-P1ABX	Purified Ab WITHOUT BSA and Azide at 1.0mg/ml	100 ug	499.00

Human Entrez Gene ID	960
Human SwissProt	P16070
Human Unigene	502328
Human Gene Symbol	CD44
Human Chromosome Location	11p13
Synonyms	LHR; BA-1; chondroitin sulfate proteoglycan 8 (CSPG8); Epican; Extracellular Matrix Receptor III (ECM III); GP90 Lymphocyte Homing Adhesion Receptor; HCAM; HCELL; hematopoietic cell E- and L-selectin ligand; Heparan Sulfate Proteoglycan; Hermes Antigen; HAS; HUTCH I; Hyaluronate Receptor; Indian blood group; Inlu Related p80 Glycoprotein; Ly 24; MDU2; MDU3; MIC4; MUTCH I; Phagocytic Glycoprotein 1 (PGP-1)

Immunogen	Stimulated human leukocytes
Host / Ig Isotype	Mouse / IgG2a, kappa
Mol. Weight of Antigen	80-95kDa
Cellular Localization	Cell Surface
Species Reactivity	Human, Baboon, Green Monkey.
Positive Control	HeLa cells. Paracortex in tonsil or lymph node.



Formalin-fixed, paraffin-embedded human Tonsil stained with CD44 Mouse Monoclonal Antibody (156-3C11).



Specificity & Comments

Recognizes a cell surface glycoprotein of 80-95kDa (CD44) on lymphocytes, monocytes, and granulocytes (Leucocyte Typing Workshop V). Its epitope is resistant to digestion by trypsin and chymotrypsin. This MAb selectively interferes with lymphocyte binding to lymph node, mucosal and synovial endothelium. The CD44 family of glycoproteins exists in a number of variant isoforms, the most common being the standard 85-95kDa or hematopoietic variant (CD44s). Higher molecular weight isoforms are described in epithelial cells (CD44v), which are believed to function in intercellular adhesion and stromal binding. CD44 immunostaining is commonly used for the discrimination of urothelial transitional cell carcinoma in-situ from non-neoplastic changes in the urothelium.

Known Applications & Suggested Dilutions

Functional Studies (Order Ab without BSA & Azide)

Flow Cytometry (2-4ug/million cells)

Immunofluorescence (2-4ug/ml)

Western Blot (1-2ug/ml)

Immunohistochemistry (Formalin-fixed) (1-2ug/ml for 30 minutes at RT),(Staining of formalin-fixed tissues requires heating tissue sections in 10mM Tris with 1mM EDTA, pH 9.0, for 45 min at 95°C followed by cooling at RT for 20 minutes)

Optimal dilution for a specific application should be determined.

Key References

1. Schlossman SF, et. al. Leucocyte Typing V, p1713-1719, Oxford Univ. Press, 1995.

Supplied As

200ug/ml of Ab Purified from Bioreactor Concentrate by Protein A/G. Prepared in 10mM PBS with 0.05% BSA & 0.05% azide. Also available WITHOUT BSA & azide at 1.0mg/ml.

Storage and Stability

Antibody with azide - store at 2 to 8°C. Antibody without azide - store at -20 to -80°C. Antibody is stable for 24 months. Non-hazardous. No MSDS required.

Limitations

This antibody is available for research use only and is not approved for use in diagnosis.

Warranty

There are no warranties, expressed or implied, which extend beyond this description. Company is not liable for any personal injury or economic loss resulting from this product.