

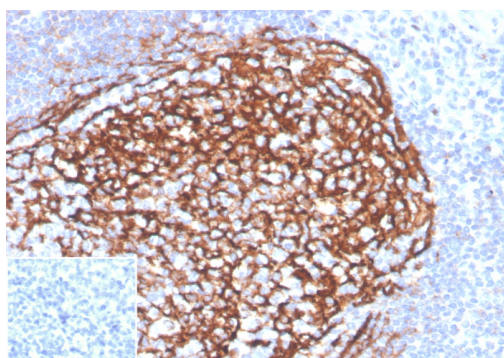
## CD21 (Mature B-Cell & Follicular Dendritic Cell Marker)

Recombinant Rabbit Monoclonal Antibody [Clone CR2/3990R]

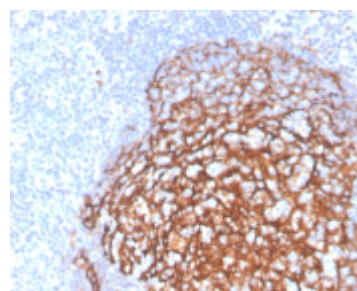
Catalog No	Format	Size	Price (USD)
1380-RBM12-P0	Purified Ab with BSA and Azide at 200ug/ml	20 ug	219.00
1380-RBM12-P1	Purified Ab with BSA and Azide at 200ug/ml	100 ug	499.00
1380-RBM12-P1ABX	Purified Ab WITHOUT BSA and Azide at 1.0mg/ml	100 ug	499.00

Human Entrez Gene ID	1380
Human SwissProt	P20023Human
Human Unigene	445757
Human Gene Symbol	CR2
Human Chromosome Location	1q32
Synonyms	CD21; Complement C3d receptor (C3DR); Complement Receptor type 2 (CR2); CVID7; EBV receptor; EBV-R; Epstein-Barr virus receptor; EVBR; SLEB9

Immunogen	Synthetic peptide corresponding to CD21 residues within aa933-C terminal of CD21.
Host / Ig Isotype	Rabbit / IgG
Mol. Weight of Antigen	140kDa
Cellular Localization	Cell Surface
Species Reactivity	Human.
Positive Control	Human tonsil tissue.



Formalin-fixed, paraffin-embedded human tonsil stained with CD21 Recombinant Rabbit Monoclonal Antibody (CR2/3990R). Inset: PBS instead of primary antibody; secondary only negative control.



### Specificity & Comments

CD21 also known as complement C3d receptor, Epstein-Barr virus receptor, and complement receptor type 2 (CR2), is a protein that in humans is encoded by the CR2 gene. This protein is involved in the complement system. It binds to iC3b (inactive derivative of C3b), C3dg, or C3d. B cells have CR2 receptors on their surfaces, allowing the complement system to play a role in B-cell activation and maturation. It is expressed by follicular dendritic cells (FDC) and mature B cells, as well as by several types of epithelial cells. CD21 is useful in the identification of follicular dendritic cell matrix found in normal lymph node and tonsillar tissue, and also useful in identifying abnormal.

### Known Applications & Suggested Dilutions

Immunohistochemistry (Formalin-fixed) (1-2ug/ml for 30 minutes at RT) (Staining of formalin-fixed tissues requires heating tissue sections in 10mM Tris with 1mM EDTA, pH 9.0, for 45 min at 95°C followed by cooling at RT for 20 minutes)  
Optimal dilution for a specific application should be determined.

### Key References

1. Barel M, et al. Mol Immunol. 1995 Apr;32(6):389-97.
2. Tanner J, et al. J Virol. 1988 Dec;62(12):4452-64.

### Supplied As

200ug/ml of Ab purified from Bioreactor Concentrate by Protein A/G. Prepared in 10mM PBS with 0.05% BSA & 0.05% azide. Also available WITHOUT BSA & azide at 1.0mg/ml.

### Storage and Stability

Antibody with azide - store at 2 to 8°C. Antibody without azide - store at -20 to -80°C. Antibody is stable for 24 months. Non-hazardous. No MSDS required.

### Limitations

This antibody is available for research use only and is not approved for use in diagnosis.

### Warranty

There are no warranties, expressed or implied, which extend beyond this description. Company is not liable for any personal injury or economic loss resulting from this product.