

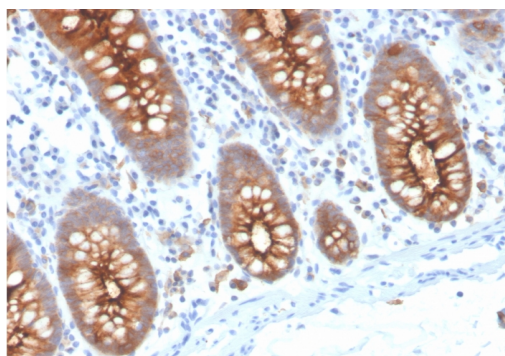
Carcinoembryonic Antigen (CEA) / CD66e

Recombinant Rabbit Monoclonal Antibody [Clone C66/3707R]

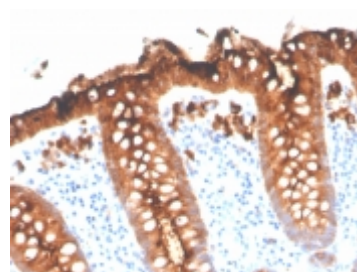
Catalog No	Format	Size	Price (USD)
1048-RBM17-P0	Purified Ab with BSA and Azide at 200ug/ml	20 ug	219.00
1048-RBM17-P1	Purified Ab with BSA and Azide at 200ug/ml	100 ug	499.00
1048-RBM17-P1ABX	Purified Ab WITHOUT BSA and Azide at 1.0mg/ml	100 ug	499.00

Human Entrez Gene ID	1048
Human SwissProt	P06731
Human Unigene	709196
Human Gene Symbol	CEACAM5
Human Chromosome Location	19q13.2
Synonyms	Carcinoembryonic Antigen-related Cell Adhesion Molecule 5, CEACAM5, CD66, Biliary Glycoprotein (BGP-1)

Immunogen	Recombinant full-length human CEA protein
Host / Ig Isotype	Rabbit / IgG
Mol. Weight of Antigen	180-200kDa
Cellular Localization	Cytoplasm. Luminal membrane.
Species Reactivity	Human.
Positive Control	MCF7 or 293T cells. Colon carcinoma



Formalin-fixed, paraffin-embedded human colon stained with CEA Recombinant Rabbit Monoclonal Antibody (C66/3707R).



Specificity & Comments

Carcinoembryonic antigen (CEA) is a glycoprotein produced in colorectal cancer tissues. In normal adult tissue, CEA is expressed in the apical border and, to a lesser extent in the cytoplasm, of the columnar cells of colon, small intestine, stomach (surface epithelium, mucous neck cells and weakly in pyloric mucous cells), pancreatic ducts, secretory epithelia of sweat glands, squamous epithelial cells of the tongue, esophagus, uterine cervix, and urothelium. The CEA antibody is a useful aid for classification of adenocarcinomas, notably in the gastrointestinal tract, including colonic and pancreatic carcinomas. IHC results also aid in the classification of secretory meningiomas and medullary carcinoma of the thyroid.

Known Applications & Suggested Dilutions

Immunohistochemistry (Formalin-fixed) (1-2ug/ml for 30 minutes at RT)
(Staining of formalin-fixed tissues requires heating tissue sections in 10mM Tris with 1mM EDTA, pH 9.0, for 45 min at 95 °C followed by cooling at RT for 20 minutes)
Optimal dilution for a specific application should be determined.

Key References

- Boogerd, L., et al. 2017. Correlation between preoperative serum carcinoembryonic antigen levels and expression on pancreatic and rectal cancer tissue. Biomark. Cancer 9: 1179299X17710016.

Supplied As

200ug/ml of Ab purified from Bioreactor Concentrate by Protein A/G. Prepared in 10mM PBS with 0.05% BSA & 0.05% azide. Also available WITHOUT BSA & azide at 1.0mg/ml.

Storage and Stability

Antibody with azide - store at 2 to 8 °C. Antibody without azide - store at -20 to -80 °C. Antibody is stable for 24 months. Non-hazardous. No MSDS required.

Limitations

This antibody is available for research use only and is not approved for use in diagnosis.

Warranty

There are no warranties, expressed or implied, which extend beyond this description. Company is not liable for any personal injury or economic loss resulting from this product.