

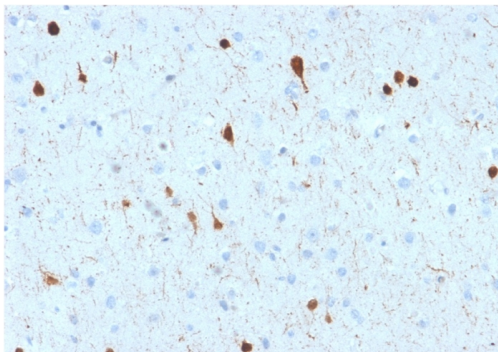
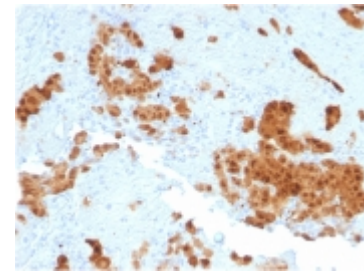
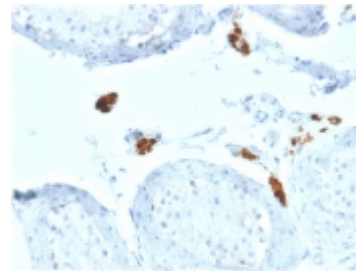
## Calretinin / Calbindin 2 (Mesothelioma Marker)

Mouse Monoclonal Antibody [Clone CALB2/2602]

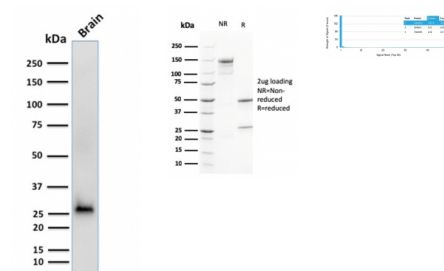
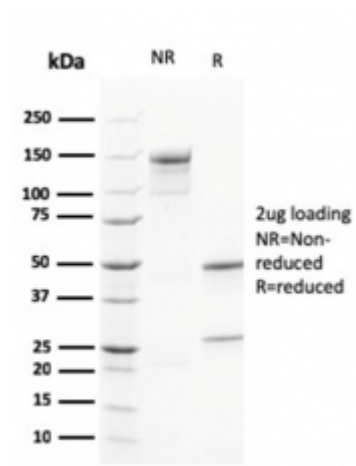
Catalog No	Format	Size	Price (USD)
794-MSM3-P0	Purified Ab with BSA and Azide at 200ug/ml	20 ug	219.00
794-MSM3-P1	Purified Ab with BSA and Azide at 200ug/ml	100 ug	499.00
794-MSM3-P1ABX	Purified Ab WITHOUT BSA at 1.0mg/ml	100 ug	499.00

Human Entrez Gene ID	794
Human SwissProt	P22676
Human Unigene	106857
Human Gene Symbol	CALB2
Human Chromosome Location	16q22.2
Synonyms	29kDa calbindin; CAB29; CAL2; CALB2; Calbindin 2; Calbindin D29K; Calretinin; CR

Immunogen	Recombinant human Calretinin (Calbindin 2) protein fragment (around aa23-242) (exact sequence is proprietary)
Host / Ig Isotype	Mouse / IgG1, kappa
Mol. Weight of Antigen	29kDa
Cellular Localization	Cytoplasmic and Nuclear
Species Reactivity	Human.
Positive Control	Brain, Testis or Mesothelioma.



Formalin-fixed, paraffin-embedded human Cerebellum stained with Calretinin Mouse Monoclonal Antibody (CALB2/2602).



### Specificity & Comments

It recognizes a protein of about 29kDa, which is identified as Calretinin (also known as Calbindin 2). Calretinin is a vitamin D-dependent calcium-binding protein involved in calcium signaling. It is present in subsets of neurons throughout the brain and spinal chord, including sensory ganglia. Antibody to calretinin is useful in differentiating mesothelioma from adenocarcinomas of the lung. It also aids in differentiating adrenal cortical neoplasms from pheochromocytomas.

### Known Applications & Suggested Dilutions

#### Western Blot (1-2ug/ml)

Immunohistochemistry (Formalin-fixed) (1-2ug/ml for 30 minutes at RT)(Staining of formalin-fixed tissues requires heating tissue sections in 10mM Tris with 1mM EDTA, pH 9.0, for 45 min at 95&degC followed by cooling at RT for 20 minutes)

Optimal dilution for a specific application should be determined.

### Key References

1. Doglioni, C., et al. 1996. Am. J. Surg. Pathol. 20: 1037-1046.
2. Rogers, J.H. 1987. J. Cell Biol. 105: 1343-1353.

### Supplied As

200ug/ml of Ab Purified from rabbit anti-serum by Protein A. Prepared in 10mM PBS with 0.05% BSA & 0.05% azide. Also available WITHOUT BSA at 1.0mg/ml.

### Storage and Stability

Antibody with azide - store at 2 to 8°C. Antibody without azide - store at -20 to -80°C. Antibody is stable for 24 months. Non-hazardous. No MSDS required.

### Limitations

This antibody is available for research use only and is not approved for use in diagnosis.

### Warranty

There are no warranties, expressed or implied, which extend beyond this description. Company is not liable for any personal injury or economic loss resulting from this product.