

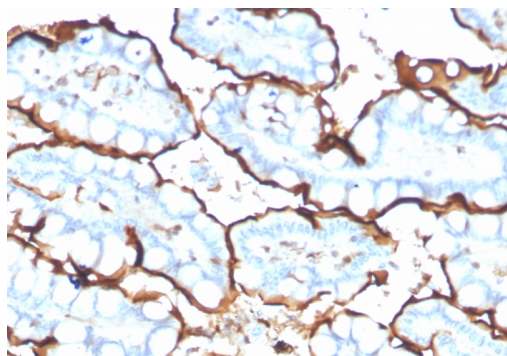
## Angiotensin I Converting Enzyme (ACE) / CD143

### Mouse Monoclonal Antibody [Clone ACE/3765]

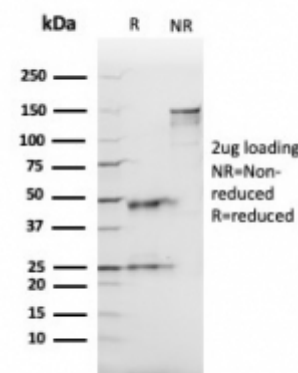
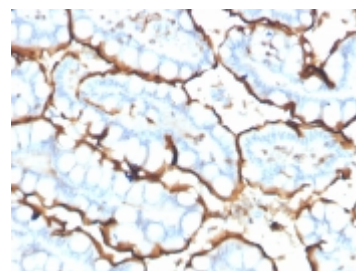
| Catalog No      | Format  | Size   | Price (USD) |
|-----------------|---|--------|-------------|
| 1636-MSM5-P0    | Purified Ab with BSA and Azide at 200ug/ml    | 20 ug  | 219.00      |
| 1636-MSM5-P1    | Purified Ab with BSA and Azide at 200ug/ml    | 100 ug | 499.00      |
| 1636-MSM5-P1ABX | Purified Ab WITHOUT BSA and Azide at 1.0mg/ml | 100 ug | 499.00      |

|                           |   |
|---------------------------|---|
| Human Entrez Gene ID      | 1636  |
| Human SwissProt           | P12821  |
| Human Unigene             | 298469  |
| Human Gene Symbol         | ACE   |
| Human Chromosome Location | 17q23.3   |
| Synonyms                  | ACE; ACE1; angiotensin 1 converting enzyme 1; carboxypeptidase; CD143; CD143 antigen; DCP; DCP1; dipeptidyl carboxypeptidase 1; Kininase II; MVCD3; peptidase P; testicular ECA |

|                        |   |
|------------------------|---|
| Immunogen              | Recombinant fragment (around aa 652-788) of human ACE/CD143 protein                                       |
| Host / Ig Isotype      | Mouse / IgG2b, kappa  |
| Mol. Weight of Antigen | 150kDa  |
| Cellular Localization  | Cell Surface  |
| Species Reactivity     | Human.  |
| Positive Control       | Ubiquitously expressed, with highest levels in lung, kidney, heart, gastrointestinal system and prostate. |



Formalin-fixed, paraffin-embedded human small intestine stained with ACE / CD143 Mouse Monoclonal Antibody (ACE/3765).



### Specificity & Comments

This gene encodes an enzyme involved in catalyzing the conversion of angiotensin I into a physiologically active peptide angiotensin II. Angiotensin II is a potent vasopressor and aldosterone-stimulating peptide that controls blood pressure and fluid-electrolyte balance. This enzyme plays a key role in the renin-angiotensin system. Many studies have associated the presence or absence of a 287 bp Alu repeat element in this gene with the levels of circulating enzyme or cardiovascular pathophysiology. Two most abundant alternatively spliced variants of this gene encode two isoforms - the somatic form and the testicular form that are equally active. Multiple additional alternatively spliced variants have been identified but their full length nature has not been determined.

### Known Applications & Suggested Dilutions

Western Blot (1-2ug/ml)  
ELISA (For coating, order antibody without BSA)  
Immunohistochemistry (Formalin-fixed) (1-2ug/ml for 30 minutes at RT)  
(Staining of formalin-fixed tissues requires heating tissue sections in 10mM Tris with 1mM EDTA, pH 9.0, for 45 min at 95°C followed by cooling at RT for 20 minutes)  
Optimal dilution for a specific application should be determined.

### Key References

- Morell NW et al. Cardiovasc Res. 1997 May;34(2):393-403.

### Supplied As

200ug/ml of Ab purified from Bioreactor Concentrate by Protein A/G. Prepared in 10mM PBS with 0.05% BSA & 0.05% azide. Also available WITHOUT BSA & azide at 1.0mg/ml.

### Storage and Stability

Antibody with azide - store at 2 to 8°C. Antibody without azide - store at -20 to -80°C. Antibody is stable for 24 months. Non-hazardous. No MSDS required.

### Limitations

This antibody is available for research use only and is not approved for use in diagnosis.

### Warranty

There are no warranties, expressed or implied, which extend beyond this description. Company is not liable for any personal injury or economic loss resulting from this product.