

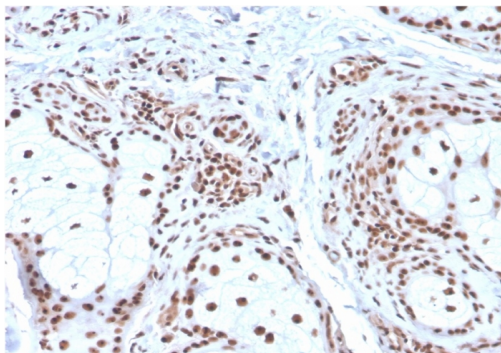
Nucleophosmin (Acute Myeloid Leukemia Marker)

Mouse Monoclonal Antibody [Clone NPM1/3286]

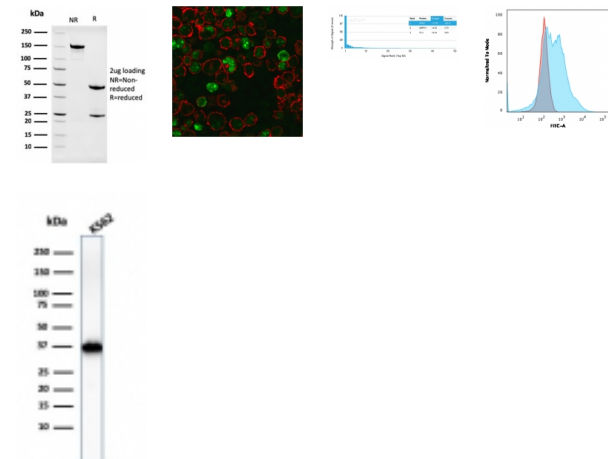
Catalog No	Format	Size	Price (USD)
4869-MSM6-P0	Purified Ab with BSA and Azide at 200ug/ml	20 ug	219.00
4869-MSM6-P1	Purified Ab with BSA and Azide at 200ug/ml	100 ug	499.00
4869-MSM6-P1ABX	Purified Ab WITHOUT BSA and Azide at 1.0mg/ml	100 ug	499.00

Human Entrez Gene ID	4869
Human SwissProt	P06748
Human Unigene	557550
Human Gene Symbol	NPM1
Human Chromosome Location	5q35.1
Synonyms	NO38; NPM; NPM1; Nucleolar phosphoprotein B23; Nucleolar protein NO38; Nucleophosmin (nucleolar phosphoprotein B23 numatrin); Nucleophosmin; Nucleophosmin/nucleoplasmin family member 1; Numatrin

Immunogen	Recombinant human NPM1 protein fragment (aa185-287) (exact sequence is proprietary)
Host / Ig Isotype	Mouse / IgG1, kappa
Mol. Weight of Antigen	33kDa
Cellular Localization	Nuclear and Cytoplasmic
Species Reactivity	Human.
Positive Control	K562 cells. Human colon or skin tissues (IHC).



Formalin-fixed, paraffin-embedded human Basal Cell Carcinoma stained with Nucleophosmin Mouse Monoclonal Antibody (NPM1/3286).



Specificity & Comments

Recognizes a 33kDa glycoprotein, identified as Nucleophosmin (NPM). It is predominantly localized in the nucleus of cells in most tissues. NPM is involved in ribosomal assembly and rRNA transport. It is an abundant protein that is highly phosphorylated by Cdc2 kinase during mitosis. This phosphoprotein moves between the nucleus and the cytoplasm. It is thought to be involved in several processes including regulation of the ARF/p53 pathway. A number of genes are fusion partners, in particular the anaplastic lymphoma kinase gene on chromosome 2. Mutations in exon 12 affecting the C-terminus of the protein are associated with an aberrant cytoplasmic location. Mutations in this gene are associated with acute myeloid leukemia. The antibody may be a useful aid for classification of acute myeloid leukemia.

Known Applications & Suggested Dilutions

ELISA (Use Ab at 2-4ug/ml for coating) (Order Ab without BSA)
Immunofluorescence (1-2ug/ml)
Flow Cytometry (1-2ug per one million cells)
Western Blot (1-2ug/ml)
Immunohistochemistry (Formalin-fixed) (1-2ug/ml for 30 min at RT)
(Staining of formalin-fixed tissues requires heating tissue sections in 10mM Tris with 1mM EDTA, pH 9.0, for 45 min at 95°C followed by cooling at RT for 20 minutes)
Optimal dilution for a specific application should be determined.

Key References

1. Nozawa, Y., et al. 1996. Expression of nucleophosmin/B23 in normal and neoplastic colorectal mucosa. J. Pathol. 178: 48-52.

Supplied As

200ug/ml of Ab Purified from Bioreactor Concentrate by Protein A/G. Prepared in 10mM PBS with 0.05% BSA & 0.05% azide. Also available WITHOUT BSA & azide at 1.0mg/ml.

Storage and Stability

Antibody with azide - store at 2 to 8°C. Antibody without azide - store at -20 to -80°C. Antibody is stable for 24 months. Non-hazardous. No MSDS required.

Limitations

This antibody is available for research use only and is not approved for use in diagnosis.

Warranty

There are no warranties, expressed or implied, which extend beyond this description. Company is not liable for any personal injury or economic loss resulting from this product.