

Recombinant CD19 (B-Lymphocyte Marker) Antibody

Rabbit Monoclonal Antibody [Clone CD19/4260R]

Catalog No	Format	Size
930-RBM10-IHC7	7.0ml of Prediluted Antibody for IHC	7.0 ml

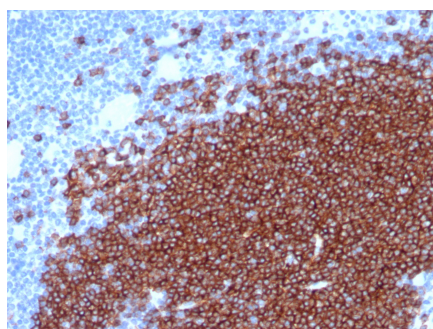
Applications	Tested Dillution	Note
Immunohistochemistry (IHC)	1-2ug/ml	30 min at RT. Staining of formalin-fixed tissues requires heating tissue sections in 10mM Tris with 1mM EDTA, pH 9.0, for 45 min at 95°C followed by cooling at RT for 20 minutes

Product Details

Clone	CD19/4260R
Gene Name	CD19
Immunogen	Recombinant fragment of human CD19 protein (around aa300-556) (exact sequence is proprietary)
Host	Rabbit
Clonality	Monoclonal
Isotype / Light Chain	IgG / Kappa
Mol. Weight of Antigen	95kDa
Cellular Localization	Cell surface
Species Reactivity	Human
Positive Control	Human tonsil, lymph node or spleen.

**Optimal dilution for a specific application should be determined.*

Product Images for Recombinant CD19 (B-Lymphocyte Marker) Antibody



Formalin-fixed, paraffin-embedded human lymph node stained with CD19 Recombinant Rabbit Monoclonal Antibody (CD19/4260R).

Specificity & Comments

CD19 is a transmembrane glycoprotein that contains two extracellular immunoglobulin-like domains. CD19 is present in both benign and malignant B-cells and is considered to be the most reliable surface marker of this lineage over a wide range of maturational stages. In normal lymphoid tissue, CD19 is observed in germinal centers, in mantle zone cells, and in scattered cells of the inter-follicular areas. Anti-CD19 exhibits an overall immunoreactivity pattern similar to those of the antibodies against CD20 and CD22. However, in contrast to CD20, expression of CD19 is continuous throughout B-cell development and through terminal differentiation of B-cells into plasma cells. Anti-CD19 positivity is seen in the vast majority of B-cell neoplasms commonly at a lower intensity than normal B-cell counterparts. Plasma cell neoplasms are nearly always negative, as are T-cell neoplasms.

Supplied As

7.0ml of Ready-to-Use for IHC staining of formalin-fixed paraffin-embedded tissues.

Storage and Stability

Antibody with azide - store at 2 to 8°C. Antibody without azide - store at -20 to -80°C. Antibody is stable for 24 months. Non-hazardous. No MSDS required.

Research Areas

B Cell Markers, Cardiovascular, Complement System, Hematopoietic Stem Cells, Immune checkpoint, Immunology, Infectious Disease, Mesenchymal Stem Cell Differentiation, Signal Transduction

Limitations and Warranty

This antibody is available for research use only and is not approved for use in diagnosis. There are no warranties, expressed or implied, which extend beyond this description. Company is not liable for any personal injury or economic loss resulting from this product.
