

TCL1 (T-Cell Marker) Antibody

Mouse Monoclonal Antibody [Clone TCL1/2078]

Catalog No	Format	Size
8115-MSM1-IHC7	7.0ml of Prediluted Antibody for IHC	7.0 ml

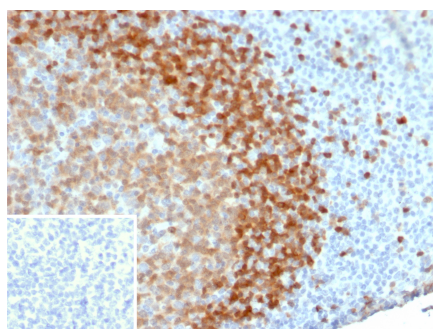
Applications	Tested Dillution	Note
Immunohistochemistry (IHC)	1-2ug/ml	30 min at RT. Staining of formalin-fixed tissues requires heating tissue sections in 10mM Tris with 1mM EDTA, pH 9.0, for 45 min at 95°C followed by cooling at RT for 20 minutes

Product Details

Clone	TCL1/2078
Gene Name	TCL1A
Immunogen	Recombinant human TCL1 protein fragment (around aa 2-109) (exact sequence is proprietary)
Host	Mouse
Clonality	Monoclonal
Isotype / Light Chain	IgG1 / Kappa
Mol. Weight of Antigen	14kDa
Cellular Localization	Cytoplasm, Endoplasmic reticulum, Microsome, Nucleus
Species Reactivity	Human
Positive Control	Human tonsil or T-cell lymphoma.

*Optimal dilution for a specific application should be determined.

Product Images for TCL1 (T-Cell Marker) Antibody



Formalin-fixed, paraffin-embedded human tonsil stained with TCL1 Mouse Monoclonal Antibody (TCL1/2078). Inset: PBS instead of primary antibody; secondary only negative control.

Specificity & Comments

T-cell leukemia/Lymphoma Protein 1A (TCL-1A), also known as p14TCL1 is a product of the TCL1 gene that is involved in T-cell prolymphocytic leukemia (TPLL). T-PLL is a rare form of mature T-cell leukemia, which is consistently associated with chromosomal rearrangements characterized by the juxtaposition of the TCRA locus on chromosome 14q11 and the TCL1A gene on 14q32.13. TCL1 is overexpressed in Burkitt lymphoma, the majority of AIDS-related non-Hodgkin lymphoma-designated immunoblastic plasmacytoid lymphoma, lymphoblastic lymphoma, chronic lymphocytic leukemia, mantle cell lymphoma, follicular lymphoma, diffuse large B-cell lymphoma, and primary cutaneous B-cell lymphoma.

Limitations and Warranty

This antibody is available for research use only and is not approved for use in diagnosis. There are no warranties, expressed or implied, which extend beyond this description. Company is not liable for any personal injury or economic loss resulting from this product.

Supplied As

7.0ml of Ready-to-Use for IHC staining of formalin-fixed paraffin-embedded tissues.

Storage and Stability

Antibody with azide - store at 2 to 8°C. Antibody without azide - store at -20 to -80°C. Antibody is stable for 24 months. Non-hazardous. No MSDS required.

Research Areas

Cancer, Immuno Oncology