

## Nucleophosmin (Acute Myeloid Leukemia Marker) Antibody

Mouse Monoclonal Antibody [Clone NPM1/3285]

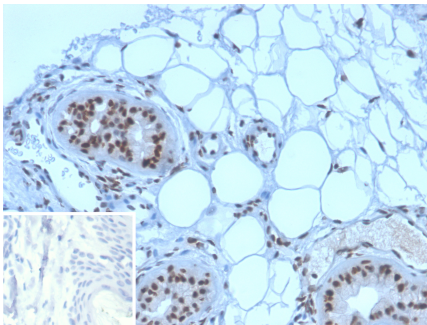
Catalog No	Format	Size
4869-MSM5-IHC7	7.0ml of Prediluted Antibody for IHC	7.0 ml

Applications	Tested Dillution	Note
Immunohistochemistry (IHC)	1-2ug/ml	30 min at RT. Staining of formalin-fixed tissues requires heating tissue sections in 10mM Tris with 1mM EDTA, pH 9.0, for 45 min at 95°C followed by cooling at RT for 20 minutes

Product Details	
Clone	NPM1/3285
Gene Name	NPM1
Immunogen	Recombinant human NPM1 protein fragment (aa185-287) (exact sequence is proprietary)
Host	Mouse
Clonality	Monoclonal
Isotype / Light Chain	IgG2c / Kappa
Mol. Weight of Antigen	33kDa
Cellular Localization	Centrosome, Cytoplasm, Cytoskeleton, Microtubule organizing center, Nucleolus, Nucleoplasm, Nucleus
Species Reactivity	Human
Positive Control	Human skin or colon.

\*Optimal dilution for a specific application should be determined.

### Product Images for Nucleophosmin (Acute Myeloid Leukemia Marker) Antibody



Formalin-fixed, paraffin-embedded human skin stained with Nucleophosmin Mouse Monoclonal Antibody (NPM1/3285). Inset: PBS instead of primary antibody; secondary only negative control.

### Specificity & Comments

Recognizes a 33kDa glycoprotein, identified as Nucleophosmin (NPM). It is predominantly localized in the nucleus of cells in most tissues. NPM is involved in ribosomal assembly and rRNA transport. It is an abundant protein that is highly phosphorylated by Cdc2 kinase during mitosis. This phosphoprotein moves between the nucleus and the cytoplasm. It is thought to be involved in several processes including regulation of the ARF/p53 pathway. A number of genes are fusion partners, in particular the anaplastic lymphoma kinase gene on chromosome 2. Mutations in exon 12 affecting the C-terminus of the protein are associated with an aberrant cytoplasmic location. Mutations in this gene are associated with acute myeloid leukemia. The antibody may be a useful aid for classification of acute myeloid leukemia.

### Supplied As

7.0ml of Ready-to-Use for IHC staining of formalin-fixed paraffin-embedded tissues.

### Storage and Stability

Antibody with azide - store at 2 to 8°C. Antibody without azide - store at -20 to -80°C. Antibody is stable for 24 months. Non-hazardous. No MSDS required.

### Research Areas

Infectious Disease, Transcription Factors

## Limitations and Warranty

This antibody is available for research use only and is not approved for use in diagnosis. There are no warranties, expressed or implied, which extend beyond this description. Company is not liable for any personal injury or economic loss resulting from this product.

---