

MUC6 (Mucin 6 / Gastric Mucin) Antibody

Mouse Monoclonal Antibody [Clone CLH5]

Catalog No	Format	Size
4588-MSM1-IHC7	7.0ml of Prediluted Antibody for IHC	7.0 ml

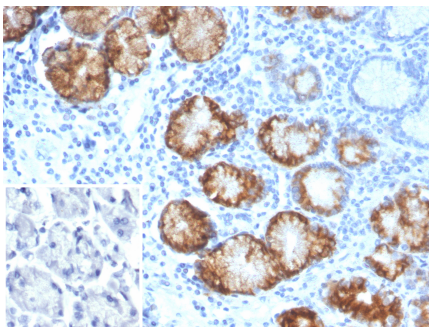
Applications	Tested Dillution	Note
Immunohistochemistry (IHC)	1-2ug/ml	30 min at RT. Staining of formalin-fixed tissues requires heating tissue sections in 10mM Tris with 1mM EDTA, pH 9.0, for 45 min at 95°C followed by cooling at RT for 20 minutes

Product Details

Clone	CLH5
Gene Name	MUC6
Immunogen	A synthetic peptide of the Gastric Mucin 6 tandem repeat sequence
Host	Mouse
Clonality	Monoclonal
Isotype / Light Chain	IgG1 / Kappa
Mol. Weight of Antigen	252kDa
Cellular Localization	Secreted
Species Reactivity	Human
Positive Control	Human stomach.

**Optimal dilution for a specific application should be determined.*

Product Images for MUC6 (Mucin 6 / Gastric Mucin) Antibody



Formalin-fixed, paraffin-embedded human stomach stained with Mucin 6 Mouse Monoclonal Antibody (CLH5). Inset: PBS instead of primary antibody; secondary only negative control.

Specificity & Comments

The MUC6 gastric mucin is a secreted glycoprotein that plays an essential role in epithelial cyto-protection from acid, proteases, pathogenic microorganisms, and mechanical trauma in the gastrointestinal tract. Mucin 6 expression is highest in the stomach and gall bladder, with lower expression in the terminal ileum and right colon. In gastric cancer, Mucin 6 has an altered expression. In normal stomach, Mucin 6 is associated with Lewis type 2; Mucin 6 is also expressed in gastric metaplasia, duodenum and pancreas. Mucin 6 is a secretory mucin, located in the deeper mucosal folds of human gall bladder, and its expression is altered with increasing degrees of inflammation.

Limitations and Warranty

This antibody is available for research use only and is not approved for use in diagnosis. There are no warranties, expressed or implied, which extend beyond this description. Company is not liable for any personal injury or economic loss resulting from this product.

Supplied As

7.0ml of Ready-to-Use for IHC staining of formalin-fixed paraffin-embedded tissues.

Storage and Stability

Antibody with azide - store at 2 to 8 °C. Antibody without azide - store at -20 to -80 °C. Antibody is stable for 24 months. Non-hazardous. No MSDS required.

Research Areas

Immunology, Infectious Disease