

PLA2R1 / Phospholipase A2 Receptor 1 Antibody

Mouse Monoclonal Antibody [Clone PLA2R1/4893]

Catalog No	Format	Size
22925-MSM3-IHC7	7.0ml of Prediluted Antibody for IHC	7.0 ml

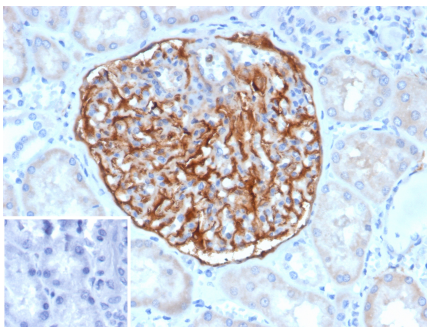
Applications	Tested Dillution	Note
Immunohistochemistry (IHC)	1-2ug/ml	30 min at RT. Staining of formalin-fixed tissues requires heating tissue sections in 10mM Tris with 1mM EDTA, pH 9.0, for 45 min at 95°C followed by cooling at RT for 20 minutes

Product Details

Clone	PLA2R1/4893
Gene Name	PLA2R1
Immunogen	Recombinant fragment (around aa395-530) of human PLA2R1 protein (exact sequence is proprietary)
Host	Mouse
Clonality	Monoclonal
Isotype / Light Chain	IgG2 / Kappa
Mol. Weight of Antigen	180kDa
Cellular Localization	Cell membrane, Secreted
Species Reactivity	Human
Positive Control	Human kidney.

**Optimal dilution for a specific application should be determined.*

Product Images for PLA2R1 / Phospholipase A2 Receptor 1 Antibody



Formalin-fixed, paraffin-embedded human kidney stained with PLA2R1 Mouse Monoclonal Antibody (PLA2R1/4897). Inset: PBS instead of primary antibody; secondary only negative control.

Specificity & Comments

This gene represents a phospholipase A2 receptor. The encoded protein likely exists as both a transmembrane form and a soluble form. The transmembrane receptor may play a role in clearance of phospholipase A2, thereby inhibiting its action. Polymorphisms at this locus have been associated with susceptibility to idiopathic membranous nephropathy. Alternatively spliced transcript variants encoding different isoforms have been identified.

Supplied As

7.0ml of Ready-to-Use for IHC staining of formalin-fixed paraffin-embedded tissues

Storage and Stability

Antibody with azide - store at 2 to 8 °C. Antibody without azide - store at -20 to -80 °C. Antibody is stable for 24 months. Non-hazardous. No MSDS required.

Research Areas

Cardiovascular, Metabolism

Limitations and Warranty

This antibody is available for research use only and is not approved for use in diagnosis. There are no warranties, expressed or implied, which extend beyond this description. Company is not liable for any personal injury or economic loss resulting from this product.