

## Recombinant Calbindin 1 (CALB1) Antibody

Rabbit Monoclonal Antibody [Clone CALB1/9805R]

Catalog No	Format	Size
793-RBM8-P0	Purified Ab with BSA and Azide at 200ug/ml	20 ug
793-RBM8-P1	Purified Ab with BSA and Azide at 200ug/ml	100 ug
793-RBM8-P1ABX	Purified Ab WITHOUT BSA or Azide at 1.0mg/ml	100 ug

Applications	Tested Dillution	Note
Immunohistochemistry (IHC)	1-2ug/ml	30 min at RT. Staining of formalin-fixed tissues requires heating tissue sections in 10mM Tris with 1mM EDTA, pH 9.0, for 45 min at 95°C followed by cooling at RT for 20 minutes
Western Blot (WB)	2-4ug/ml	

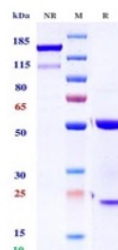
### Product Details

<b>Clone</b>	CALB1/9805R
<b>Immunogen</b>	Recombinant fragment (around aa7-96) of the human Calbindin 1 (CALB1) protein (exact sequence is proprietary)
<b>Host</b>	Rabbit
<b>Clonality</b>	Monoclonal
<b>Isotype / Light Chain</b>	IgG / Kappa
<b>Mol. Weight of Antigen</b>	30.02kDa
<b>Species Reactivity</b>	Human
<b>Positive Control</b>	brain, lung, pancreas or liver.kidney

\*Optimal dilution for a specific application should be determined.

### Product Images for Recombinant Calbindin 1 (CALB1) Antibody

#### Purity: SDS-PAGE



SDS-PAGE under non-reducing (NR) and reducing (R) conditions. The gel was stained with Coomassie Blue. The purity of the protein is 96%.

SDS-PAGE Analysis of Purified CALB1 Recombinant Rabbit Monoclonal Antibody (CALB1/9805R). Confirmation of Purity and Integrity of Antibody.

### Specificity & Comments

Calbindin is a calcium-binding protein belonging to the troponin C superfamily. It functions as a buffer for cytoplasmic calcium and is found in the brain, kidney, gut and pancreatic islets. In normal brain, calbindin has been identified in medium sized neurons of the neuropil of the matrix compartment of the striatum, the woolly fiber arrangements of the globus pallidus and the fiber structures of the pars reticula of the substantia nigra. A proportion of dendritic cells within the light zone of germinal centers have also been noted to be positive for calbindin.

### Limitations and Warranty

This antibody is available for research use only and is not approved for use in diagnosis. There are no warranties, expressed or implied, which extend beyond this description. Company is not liable for any personal injury or economic loss resulting from this product.

### Supplied As

200ug/ml of Ab produced in a mammalian-based expression system. Prepared in 10mM PBS with 0.05% BSA & 0.05% azide. Also available WITHOUT BSA & azide at 1.0mg/ml.

### Storage and Stability

Antibody with azide - store at 2 to 8 °C. Antibody without azide - store at -20 to -80 °C. Antibody is stable for 24 months. Non-hazardous. No MSDS required.