

Recombinant EpCAM / CD326 (Epithelial Marker) Antibody

Rabbit Monoclonal Antibody [Clone EGP40/9960R]

Catalog No	Format	Size
4072-RBM44-P0	Purified Ab with BSA and Azide at 200ug/ml	20 ug
4072-RBM44-P1	Purified Ab with BSA and Azide at 200ug/ml	100 ug
4072-RBM44-P1ABX	Purified Ab WITHOUT BSA and Azide at 1.0mg/ml	100 ug

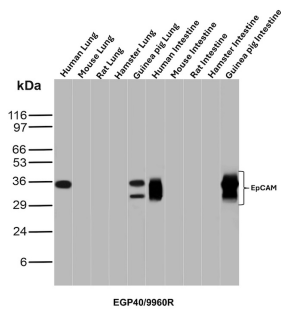
Applications	Tested Dillution	Note
Immunohistochemistry (IHC)	1-2ug/ml	30 min at RT. Staining of formalin-fixed tissues requires heating tissue sections in 10mM Tris with 1mM EDTA, pH 9.0, for 45 min at 95°C followed by cooling at RT for 20 minutes
Western Blot (WB)	2-4ug/ml	

Product Details

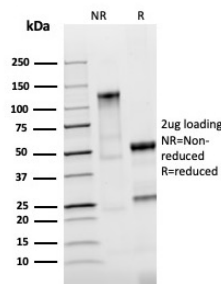
Clone	EGP40/9960R
Gene Name	EPCAM
Immunogen	Recombinant fragment from the extracellular domain of human EpCAM protein (around aa100-224) (exact sequence is proprietary)
Host	Rabbit
Clonality	Monoclonal
Isotype / Light Chain	IgG / Kappa
Mol. Weight of Antigen	40-43kDa
Cellular Localization	Cell junction, Lateral cell membrane, Tight junction
Species Reactivity	Cat, Dog, Guinea Pig, Human
Positive Control	HT29 or MCF-7 cells. Human breast or ovarian carcinoma.

*Optimal dilution for a specific application should be determined.

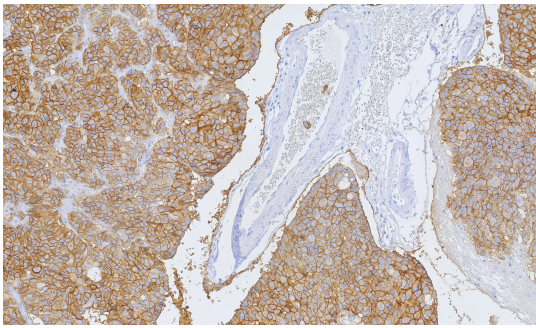
Product Images for Recombinant EpCAM / CD326 (Epithelial Marker) Antibody



Western blot analysis of lung and intestine tissue lysates from various species using EpCAM Recombinant Rabbit Monoclonal Antibody (EGP40/9960R).



SDS-PAGE Analysis of Purified EpCAM Recombinant Rabbit Monoclonal Antibody (EGP40/9960R). Confirmation of Purity and Integrity of Antibody.



Formalin-fixed, paraffin-embedded human breast carcinoma stained with EpCAM Recombinant Rabbit Monoclonal Antibody (EGP40/9960R). Inset: PBS instead of primary antibody; secondary only negative control. HIER: Tris/EDTA, pH9.0, 45min. 2°: HRP-polymer, 30min. DAB, 5min.

Specificity & Comments

Epitope of this MAb is mapped between aa 202-212 of EGP40, which is a 40-43kDa transmembrane epithelial glycoprotein, also identified as epithelial specific antigen (ESA), or epithelial cellular adhesion molecule (Ep-CAM). It is expressed on baso-lateral cell surface in most simple epithelia and a vast majority of carcinomas. Antibody to Ep-CAM has been used to distinguish adenocarcinoma from pleural mesothelioma and hepatocellular carcinoma. This antibody is also useful in distinguishing serous carcinomas of the ovary from mesothelioma.

Supplied As

200ug/ml of Ab produced in HEK293 cell mammalian-based expression system. Prepared in 10mM PBS with 0.05% BSA & 0.05% azide. Also available WITHOUT BSA & azide at 1.0mg/ml.

Storage and Stability

Antibody with azide - store at 2 to 8 °C. Antibody without azide - store at -20 to -80 °C. Antibody is stable for 24 months. Non-hazardous. No MSDS required.

Research Areas

Stem Cell Differentiation

Limitations and Warranty

This antibody is available for research use only and is not approved for use in diagnosis. There are no warranties, expressed or implied, which extend beyond this description. Company is not liable for any personal injury or economic loss resulting from this product.