

Recombinant CD11b / MAC-1 (Microglial Marker) Antibody

Rabbit Monoclonal Antibody [Clone ITGAM/13930R]

Catalog No	Format	Size
3684-RBM14-P0	Purified Ab with BSA and Azide at 200ug/ml	20 ug
3684-RBM14-P1	Purified Ab with BSA and Azide at 200ug/ml	100 ug
3684-RBM14-P1ABX	Purified Ab WITHOUT BSA or Azide at 1.0mg/ml	100 ug

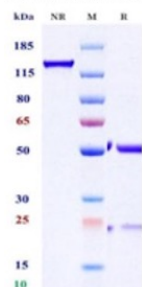
Applications	Tested Dillution	Note
Immunohistochemistry (IHC)	1-2ug/ml	30 min at RT. Staining of formalin-fixed tissues requires heating tissue sections in 10mM Tris with 1mM EDTA, pH 9.0, for 45 min at 95°C followed by cooling at RT for 20 minutes
Western Blot (WB)	2-4ug/ml	

Product Details	
Clone	ITGAM/13930R
Immunogen	Recombinant fragment (around aa941-1074) of the human CD11b protein (exact sequence is proprietary)
Host	Rabbit
Clonality	Monoclonal
Isotype / Light Chain	IgG / Kappa
Mol. Weight of Antigen	127.18kDa
Cellular Localization	Cell membrane, Membrane raft
Species Reactivity	Human
Positive Control	Spleen.

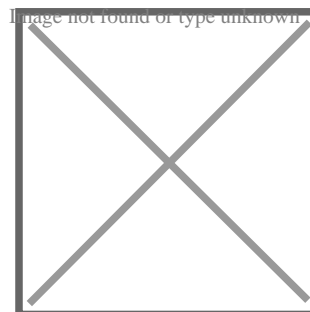
*Optimal dilution for a specific application should be determined.

Product Images for Recombinant CD11b / MAC-1 (Microglial Marker) Antibody

Purity: SDS-PAGE



SDS-PAGE under non-reducing (NR) and reducing (R) conditions. The gel was stained with Coomassie Blue. The purity of the protein is 96%.



SDS-PAGE Analysis of Purified CD11b Recombinant Rabbit Monoclonal Antibody (ITGAM/13930R) of Purity and Integrity of Antibody.

Western Blot Analysis of spleen tissue lysates of different species using CD11b Recombinant Rabbit Monoclonal Antibody (ITGAM/13930R).

Specificity & Comments

CD11b is a cell adhesion molecule that acts as a receptor for cell surface ligands such as intracellular adhesion molecules (ICAMs) or soluble ligands. Integrins are heterodimeric proteins that contain an α chain and β chain. Integrin α M combines with the Integrin β 2 to form a leukocyte-specific integrin referred to as macrophage receptor 1 (Mac-1), or inactivated-C3b (iC3b) receptor 3 (CR3). Integrin α M/ β 2 is important in the adherence of neutrophils and monocytes to stimulated endothelium, and also in the phagocytosis of complement coated particles. The protein CD11b has been implicated in the various adhesion-related interactions of cells such as monocytes, macrophages, natural killer (NK) cells, and granulocytes. It is part of a heterodimer that consists of CD11b and CD18. It also modulates the uptake of complement-coated particles within the cell. It is commonly used as a microglial marker in tissues derived from the nervous system.

Limitations and Warranty

This antibody is available for research use only and is not approved for use in diagnosis. There are no warranties, expressed or implied, which extend beyond this description. Company is not liable for any personal injury or economic loss resulting from this product.

Supplied As

200ug/ml of Ab produced in a mammalian-based expression system. Prepared in 10mM PBS with 0.05% BSA & 0.05% azide. Also available WITHOUT BSA & azide at 1.0mg/ml.

Storage and Stability

Antibody with azide - store at 2 to 8 °C. Antibody without azide - store at -20 to -80 °C. Antibody is stable for 24 months. Non-hazardous. No MSDS required.
