

Recombinant immunoglobulin kappa constant Antibody

Rabbit Monoclonal Antibody [Clone IGKC/13940R]

Catalog No	Format	Size
3514-RBM15-P0	Purified Ab with BSA and Azide at 200ug/ml	20 ug
3514-RBM15-P1	Purified Ab with BSA and Azide at 200ug/ml	100 ug
3514-RBM15-P1ABX	Purified Ab WITHOUT BSA or Azide at 1.0mg/ml	100 ug

Applications	Tested Dillution	Note
Immunohistochemistry (IHC)	1-2ug/ml	30 min at RT. Staining of formalin-fixed tissues requires heating tissue sections in 10mM Tris with 1mM EDTA, pH 9.0, for 45 min at 95°C followed by cooling at RT for 20 minutes
Western Blot (WB)	2-4ug/ml	

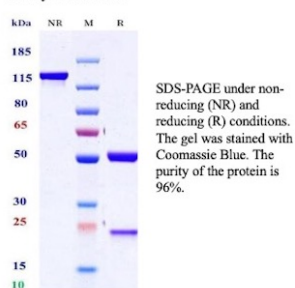
Product Details

Clone	IGKC/13940R
Immunogen	Immunoglobulin kappa light chain
Host	Rabbit
Clonality	Monoclonal
Isotype / Light Chain	IgG / Kappa
Species Reactivity	Human
Positive Control	293T, Raji or hPBL cells. Tonsil or Spleen. Serum.

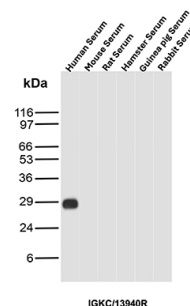
*Optimal dilution for a specific application should be determined.

Product Images for Recombinant immunoglobulin kappa constant Antibody

Purity: SDS-PAGE



SDS-PAGE Analysis of Purified Kappa Light Chain Recombinant Rabbit Monoclonal Antibody (IGKC/13940R) of Purity and Integrity of Antibody.



Western blot analysis of Serum tissue lysates of different species using Kappa Light Chain Recombinant Rabbit Monoclonal Antibody (IGKC/13940R).

Specificity & Comments

This MAb is specific to kappa light chain of immunoglobulin and shows no cross-reaction with lambda light chain or any of the five heavy chains. It recognizes human Ig kappa light chains of both secreted and cell surface immunoglobulin. It detects also free kappa light chains. In mammals, the two light chains in an antibody are always identical, with only one type of light chain, kappa or lambda. The ratio of Kappa to Lambda is 70:30. However, with the occurrence of multiple myeloma or other B-cell malignancies this ratio is disturbed. Antibody to the kappa light chain is reportedly useful in the identification of leukemias, plasmacytomas, and certain non-Hodgkin's lymphomas. Demonstration of clonality in lymphoid infiltrates indicates that the infiltrate is malignant.

Supplied As

200ug/ml of Ab produced in a mammalian-based expression system. Prepared in 10mM PBS with 0.05% BSA & 0.05% azide. Also available WITHOUT BSA & azide at 1.0mg/ml.

Storage and Stability

Antibody with azide - store at 2 to 8 °C. Antibody without azide - store at -20 to -80 °C. Antibody is stable for 24 months. Non-hazardous. No MSDS required.

Limitations and Warranty

This antibody is available for research use only and is not approved for use in diagnosis. There are no warranties, expressed or implied, which extend beyond this description. Company is not liable for any personal injury or economic loss resulting from this product.
