

## Recombinant CD34 (Hematopoietic Stem Cell & Endothelial Marker) Antibody

Mouse Monoclonal Antibody [Clone rCD34/13639]

Catalog No	Format	Size
947-MSM36-P1	Purified Ab with BSA and Azide at 200ug/ml	100 ug
947-MSM36-P1ABX	Purified Ab WITHOUT BSA or Azide at 1.0mg/ml	100 ug
947-MSM36-P0	Purified Ab with BSA and Azide at 200ug/ml	20 ug
947-MSM36-P0	Purified Ab with BSA and Azide at 200ug/ml	20 ug

Applications	Tested Dillution	Note
Immunohistochemistry (IHC)	1-2ug/ml	30 min at RT. Staining of formalin-fixed tissues requires heating tissue sections in 10mM Tris with 1mM EDTA, pH 9.0, for 45 min at 95°C followed by cooling at RT for 20 minutes
Western Blot (WB)	2-4ug/ml	

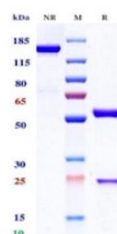
### Product Details

<b>Clone</b>	rCD34/13639
<b>Immunogen</b>	Human endothelial vesicles
<b>Host</b>	Mouse
<b>Clonality</b>	Monoclonal
<b>Isotype / Light Chain</b>	IgG1 / Lambda
<b>Mol. Weight of Antigen</b>	40.72kDa
<b>Cellular Localization</b>	Membrane
<b>Species Reactivity</b>	Human
<b>Positive Control</b>	Jurkat or KG-1 cells. Human tonsil or angiosarcoma.

\*Optimal dilution for a specific application should be determined.

### Product Images for Recombinant CD34 (Hematopoietic Stem Cell & Endothelial Marker) Antibody

Purity: SDS-PAGE



SDS-PAGE under non-reducing (NR) and reducing (R) conditions. The gel was stained with Coomassie Blue. The purity of the protein is greater than 95%.

SDS-PAGE Analysis of Purified CD34 / HPCA1 Recombinant Mouse Monoclonal Antibody (rCD34/13639). Confirmation of Purity and Integrity of Antibody.

### **Specificity & Comments**

This MAb recognizes a single chain, transmembrane, heavily glycosylated protein of 90-120kDa, which is identified as CD34. On the basis of differential sensitivity to degradation by specific enzymes, epitopes of monoclonal antibodies to CD34 are classified into three main categories, class I, class II and class III. It is a class II antibody whose epitope is resistant to neuraminidase but sensitive to glycoprotease and chymopapain. CD34 expression is a hallmark for identifying pluripotent hematopoietic stem or progenitor cells. Its expression is gradually lost as lineage committed progenitors differentiate. CD34 is a marker of choice for staining blasts in acute myeloid leukemia. In addition, CD34 is expressed by soft tissue tumors, such as solitary fibrous tumor and gastrointestinal stromal tumor. Its expression is also found in vascular endothelium. It appears that proliferating endothelial cells express this molecule more than the non-proliferating endothelial cells. Anti-CD34 labels > 85% of angiosarcoma and Kaposi s sarcoma, but with a lower specificity.

---

### **Limitations and Warranty**

This antibody is available for research use only and is not approved for use in diagnosis. There are no warranties, expressed or implied, which extend beyond this description. Company is not liable for any personal injury or economic loss resulting from this product.

---

### **Supplied As**

200ug/ml of Ab produced in a mammalian-based expression system. Prepared in 10mM PBS with 0.05% BSA & 0.05% azide. Also available WITHOUT BSA & azide at 1.0mg/ml.

---

### **Storage and Stability**

Antibody with azide - store at 2 to 8 °C. Antibody without azide - store at -20 to -80 °C. Antibody is stable for 24 months. Non-hazardous. No MSDS required.

---