

## Recombinant Arginase1 (Hepatocellular Carcinoma Marker) Antibody

Mouse Monoclonal Antibody [Clone rARG1/8042]

Catalog No	Format	Size
383-MSM15-P0	Purified Ab with BSA and Azide at 200ug/ml	20 ug
383-MSM15-P1	Purified Ab with BSA and Azide at 200ug/ml	100 ug
383-MSM15-P1ABX	Purified Ab WITHOUT BSA or Azide at 1.0mg/ml	100 ug

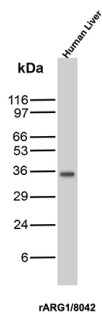
Applications	Tested Dillution	Note
Immunohistochemistry (IHC)	1-2ug/ml	30 min at RT. Staining of formalin-fixed tissues requires heating tissue sections in 10mM Tris with 1mM EDTA, pH 9.0, for 45 min at 95°C followed by cooling at RT for 20 minutes
Western Blot (WB)	2-4ug/ml	

### Product Details

<b>Clone</b>	rARG1/8042
<b>Immunogen</b>	Recombinant fragment (around aa222-322) of the human Arginase-1 protein (exact sequence is proprietary)
<b>Host</b>	Mouse
<b>Clonality</b>	Monoclonal
<b>Isotype / Light Chain</b>	IgG1 / Kappa
<b>Mol. Weight of Antigen</b>	34.73kDa
<b>Cellular Localization</b>	Cytoplasm, Cytoplasmic granule
<b>Species Reactivity</b>	Human
<b>Positive Control</b>	Human Liver

\*Optimal dilution for a specific application should be determined.

### Product Images for Recombinant Arginase1 (Hepatocellular Carcinoma Marker) Antibody



Western Blot Analysis of human liver tissue lysate using Arginase-1 Recombinant Mouse Monoclonal Antibody (rARG1/8042).

#### Specificity & Comments

Recognizes a protein of 35-38kDa, which is identified as Arginase 1 (ARG1). Arginase is a manganese metallo-enzyme that catalyzes the hydrolysis of arginine to generate ornithine and urea. Arginase I and II are isoenzymes, which differ in subcellular localization, regulation, and possibly function. Arginase I is a cytosolic enzyme, which is expressed mainly in the liver as part of the urea cycle, whereas arginase II is a mitochondrial protein found in a variety of tissues. Antibody to ARG-1 labels hepatocytes in normal tissues and granulocytes in peripheral blood. ARG-1 is a sensitive and specific marker for identification of hepatocellular carcinoma.

#### Limitations and Warranty

This antibody is available for research use only and is not approved for use in diagnosis. There are no warranties, expressed or implied, which extend beyond this description. Company is not liable for any personal injury or economic loss resulting from this product.

#### Supplied As

200ug/ml of Ab produced in a mammalian-based expression system. Prepared in 10mM PBS with 0.05% BSA & 0.05% azide. Also available WITHOUT BSA & azide at 1.0mg/ml.

#### Storage and Stability

Antibody with azide - store at 2 to 8 °C. Antibody without azide - store at -20 to -80 °C. Antibody is stable for 24 months. Non-hazardous. No MSDS required.