

Recombinant Cytokeratin 20 (KRT20) (Colorectal Epithelial Marker) Antibody

Mouse Monoclonal Antibody [Clone rKRT20/6823]

Catalog No	Format	Size
54474-MSM13-P0	Purified Ab with BSA and Azide at 200ug/ml	20 ug
54474-MSM13-P1	Purified Ab with BSA and Azide at 200ug/ml	100 ug
54474-MSM13-P1ABX	Purified Ab WITHOUT BSA or Azide at 1.0mg/ml	100 ug

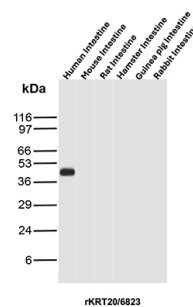
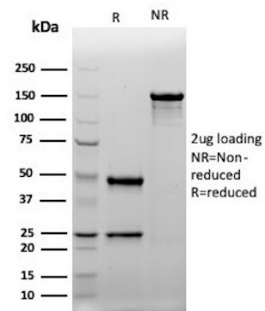
Applications	Tested Dillution	Note
Immunohistochemistry (IHC)	1-2ug/ml	30 min at RT. Staining of formalin-fixed tissues requires heating tissue sections in 10mM Tris with 1mM EDTA, pH 9.0, for 45 min at 95°C followed by cooling at RT for 20 minutes
Western Blot (WB)	2-4ug/ml	

Product Details

Clone	rKRT20/6823
Immunogen	Recombinant full-length of human KRT20 protein
Host	Mouse
Clonality	Monoclonal
Isotype / Light Chain	IgG1 / Kappa
Mol. Weight of Antigen	48.49kDa
Cellular Localization	Cytoplasm
Species Reactivity	Human
Positive Control	HT29 cells. Human colon or prostate carcinoma. Intestine.

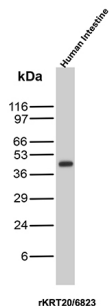
*Optimal dilution for a specific application should be determined.

Product Images for Recombinant Cytokeratin 20 (KRT20) (Colorectal Epithelial Marker) Antibody



SDS-PAGE Analysis of Purified Cytokeratin 20 Recombinant Mouse Monoclonal Antibody (rKRT20/6823). Confirmation of Purity and Integrity of Antibody.

Western Blot Analysis of Intestine tissue lysates of different species using Cytokeratin 20 Recombinant Mouse Monoclonal Antibody (rKRT20/6823).



Western Blot Analysis of Human Intestine tissue lysate using Cytokeratin 20 Recombinant Mouse Monoclonal Antibody (rKRT20/6823).

Specificity & Comments

This MAb recognizes an intermediate filament protein of 46kDa, identified as cytokeratin 20 (KRT20). KRT20 is abundantly expressed in goblet cells and enterocytes of the gastrointestinal tract. It is a useful marker of pancreatic and colorectal cancer. KRT20 is expressed under normal, hyperplastic and neoplastic conditions. It has been detected in adenocarcinomas of the colon, stomach and biliary tract. Breast carcinomas are generally non-reactive.

Limitations and Warranty

This antibody is available for research use only and is not approved for use in diagnosis. There are no warranties, expressed or implied, which extend beyond this description. Company is not liable for any personal injury or economic loss resulting from this product.

Supplied As

200ug/ml of Ab produced in a mammalian-based expression system. Prepared in 10mM PBS with 0.05% BSA & 0.05% azide. Also available WITHOUT BSA & azide at 1.0mg/ml.

Storage and Stability

Antibody with azide - store at 2 to 8 °C. Antibody without azide - store at -20 to -80 °C. Antibody is stable for 24 months. Non-hazardous. No MSDS required.