

Recombinant Podoplanin (PDPN) (Lymphatic Endothelial & Mesothelial Marker) Antibody

Mouse Monoclonal Antibody [Clone rPDPN/9606]

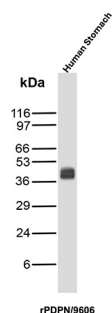
Catalog No	Format	Size
10630-MSM15-P0	Purified Ab with BSA and Azide at 200ug/ml	20 ug
10630-MSM15-P1	Purified Ab with BSA and Azide at 200ug/ml	100 ug
10630-MSM15-P1ABX	Purified Ab WITHOUT BSA or Azide at 1.0mg/ml	100 ug

Applications	Tested Dillution	Note
Immunohistochemistry (IHC)	1-2ug/ml	30 min at RT. Staining of formalin-fixed tissues requires heating tissue sections in 10mM Tris with 1mM EDTA, pH 9.0, for 45 min at 95°C followed by cooling at RT for 20 minutes
Western Blot (WB)	2-4ug/ml	

Product Details	
Clone	rPDPN/9606
Immunogen	Recombinant fragment (around aa24-126) of the human Podoplanin protein (exact sequence is proprietary)
Host	Mouse
Clonality	Monoclonal
Isotype / Light Chain	IgG1 / Kappa
Mol. Weight of Antigen	16.7kDa
Cellular Localization	Apical cell membrane, Basolateral cell membrane, Cell projection, Cytoplasm, Cytosol, Filopodium membrane, Invadopodium, Lamellipodium membrane, Membrane, Membrane raft, Microvillus membrane, Ruffle membrane
Species Reactivity	Human
Positive Control	Human Stomach.

*Optimal dilution for a specific application should be determined.

Product Images for Recombinant Podoplanin (PDPN) (Lymphatic Endothelial & Mesothelial Marker) Antibody



Western Blot Analysis of Human Stomach tissue lysate using Podoplanin Recombinant Mouse Monoclonal Antibody (rPDPN/9606).

Specificity & Comments

Podoplanin is a transmembrane mucoprotein (38 kDa) recognized by the D2-40 monoclonal antibody. Podoplanin is specifically expressed in the endothelium of lymphatic capillaries but not in the blood vasculature. In normal skin and kidney, podoplanin is co-localized with VEGFR3/FLT4, another marker for lymphatic endothelial cells. Podoplanin is selectively expressed in lymphatic endothelium as well as Lymphangiomas, Kaposi's Sarcomas and in subset Angiosarcomas with probable lymphatic differentiation. Podoplanin has also been shown to be expressed in Epithelioid Mesotheliomas, Hemangioblastomas and Seminomas.

Supplied As

200ug/ml of Ab produced in a mammalian-based expression system. Prepared in 10mM PBS with 0.05% BSA & 0.05% azide. Also available WITHOUT BSA & azide at 1.0mg/ml.

Storage and Stability

Antibody with azide - store at 2 to 8 °C. Antibody without azide - store at -20 to -80 °C. Antibody is stable for 24 months. Non-hazardous. No MSDS required.

Limitations and Warranty

This antibody is available for research use only and is not approved for use in diagnosis. There are no warranties, expressed or implied, which extend beyond this description. Company is not liable for any personal injury or economic loss resulting from this product.
