

Recombinant CD14 (Monocyte / Macrophage Marker) Antibody

Rabbit Monoclonal Antibody [Clone LPSR/13729R]

Catalog No	Format	Size
929-RBM28-P0	Purified Ab with BSA and Azide at 200ug/ml	20 ug
929-RBM28-P1	Purified Ab with BSA and Azide at 200ug/ml	100 ug
929-RBM28-P1ABX	Purified Ab WITHOUT BSA or Azide at 1.0mg/ml	100 ug

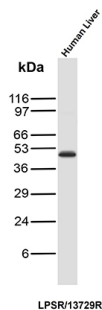
Applications	Tested Dillution	Note
Immunohistochemistry (IHC)	1-2ug/ml	30 min at RT. Staining of formalin-fixed tissues requires heating tissue sections in 10mM Tris with 1mM EDTA, pH 9.0, for 45 min at 95°C followed by cooling at RT for 20 minutes
Western Blot (WB)	2-4ug/ml	

Product Details

Clone	LPSR/13729R
Immunogen	Recombinant fragment (around aa1-100) of the human CD14 protein (exact sequence is proprietary)
Host	Rabbit
Clonality	Monoclonal
Isotype / Light Chain	IgG / Kappa
Mol. Weight of Antigen	40.08kDa
Cellular Localization	Cell membrane, Golgi apparatus, Membrane raft, Secreted
Species Reactivity	Human
Positive Control	Human lymph node or tonsil.

*Optimal dilution for a specific application should be determined.

Product Images for Recombinant CD14 (Monocyte / Macrophage Marker) Antibody



Western Blot Analysis of Human Liver tissue lysates using CD14 Recombinant Rabbit Monoclonal Antibody (LPSR/13729R).

Specificity & Comments

CD14 is receptor for endotoxin and apoptotic cells. It is expressed by monocytes/histiocytes, Langerhans' cells, follicular dendritic reticulum cells, neutrophils (weakly), and endothelial cells of the liver sinusoids. CD14 is detected in myeloid leukemias with monoblastic/monocytic differentiation, and in histiocytic neoplasms like histiocytic lymphoma, Langerhans' cell histiocytosis and giant cell tumor. In cultures, a subpopulation of Kaposi sarcoma cells express CD14. In differential diagnosis, CD14 is more specific than CD68 in the identification of monocytes/histiocytes and associated neoplasias.

Limitations and Warranty

This antibody is available for research use only and is not approved for use in diagnosis. There are no warranties, expressed or implied, which extend beyond this description. Company is not liable for any personal injury or economic loss resulting from this product.

Supplied As

200ug/ml of Ab produced in a mammalian-based expression system. Prepared in 10mM PBS with 0.05% BSA & 0.05% azide. Also available WITHOUT BSA & azide at 1.0mg/ml.

Storage and Stability

Antibody with azide - store at 2 to 8 °C. Antibody without azide - store at -20 to -80 °C. Antibody is stable for 24 months. Non-hazardous. No MSDS required.