

Recombinant MUC16 / CA125 (Ovarian Carcinoma Marker) Antibody

Rabbit Monoclonal Antibody [Clone CA125/13895R]

Catalog No	Format	Size
94025-RBM20-P0	Purified Ab with BSA and Azide at 200ug/ml	20 ug
94025-RBM20-P1	Purified Ab with BSA and Azide at 200ug/ml	100 ug
94025-RBM20-P1ABX	Purified Ab WITHOUT BSA and Azide at 1.0mg/ml	100 ug

Applications	Tested Dillution	Note
Immunohistochemistry (IHC)	1-2ug/ml	30 min at RT. Staining of formalin-fixed tissues requires heating tissue sections in 10mM Tris with 1mM EDTA, pH 9.0, for 45 min at 95°C followed by cooling at RT for 20 minutes

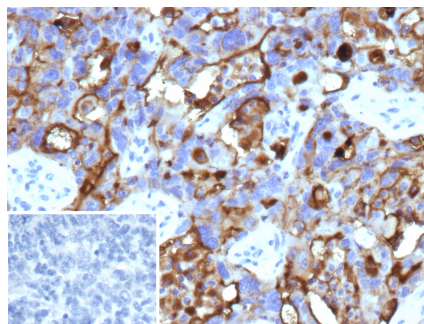
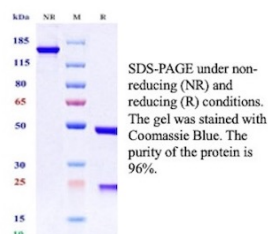
Product Details

Clone	CA125/13895R
Gene Name	MUC16
Immunogen	Recombinant human MUC16 protein
Host	Rabbit
Clonality	Monoclonal
Isotype / Light Chain	IgG / Kappa
Mol. Weight of Antigen	>2000kDa
Cellular Localization	Cell membrane, Extracellular space, Secreted
Species Reactivity	Human
Positive Control	MDA-MB-468 cells. Ovarian Cancer.

**Optimal dilution for a specific application should be determined.*

Product Images for Recombinant MUC16 / CA125 (Ovarian Carcinoma Marker) Antibody

Purity: SDS-PAGE



SDS-PAGE Analysis of Purified Mucin 16 / CA125 Recombinant Rabbit Monoclonal Antibody (CA125/13895R). Confirmation of Purity and Integrity of Antibody.

Formalin-fixed, paraffin-embedded human ovarian carcinoma stained with Mucin 16 / CA125 Recombinant Rabbit Monoclonal Antibody (CA125/13895R). Inset: PBS instead of primary antibody; secondary only negative control.

Specificity & Comments

CA125 also known as mucin 16, is a member of the mucin family glycoproteins. CA125 is a component of the ocular surface (including the cornea and conjunctiva), the respiratory tract and the female reproductive tract epithelia. Since CA125 is highly glycosylated it creates a hydrophilic environment that acts as a lubricating barrier against foreign particles and infectious agents on the apical membrane of epithelial cells. CA125 reacts with both normal tissues and neoplasms of fallopian tube, endometrium, endocervix and mesothelioma. It does not react with colon cancer. Normal tissues such as breast, liver, skin, kidney and spleen are also negative. Studies have shown that CA125 reacts with approximately 80% of epithelial ovarian neoplasms of serous, endometrioid, clear cell and undifferentiated types. No reactivity has been shown for mucinous ovarian tumors or in germ cell or hematopoietic tumors. This antibody is a useful aid for classification of a variety of tumors, such as some adenocarcinomas of the colon, breast carcinomas, malignant mesothelioma, uterine adenomatoid tumor, lung bronchoalveolar carcinoma, and ovarian endometrioid and serous carcinomas.

Limitations and Warranty

This antibody is available for research use only and is not approved for use in diagnosis. There are no warranties, expressed or implied, which extend beyond this description. Company is not liable for any personal injury or economic loss resulting from this product.

Supplied As

200ug/ml of Ab produced in CHO cell mammalian-based expression system. Prepared in 10mM PBS with 0.05% BSA & 0.05% azide. Also available WITHOUT BSA & azide at 1.0mg/ml.

Storage and Stability

Antibody with azide - store at 2 to 8 °C. Antibody without azide - store at -20 to -80 °C. Antibody is stable for 24 months. Non-hazardous. No MSDS required.

Research Areas

Immunology, Infectious Disease