

Recombinant PCNA (Proliferating Cell Nuclear Antigen) (G1- & S-phase Marker) Antibody

Rabbit Monoclonal Antibody [Clone PCNA/13725R]

Catalog No	Format	Size
5111-RBM13-P0	Purified Ab with BSA and Azide at 200ug/ml	20 ug
5111-RBM13-P1	Purified Ab with BSA and Azide at 200ug/ml	100 ug
5111-RBM13-P1ABX	Purified Ab WITHOUT BSA and Azide at 1.0mg/ml	100 ug

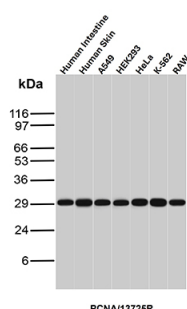
Applications	Tested Dillution	Note
Western Blot (WB)	2-4ug/ml	

Product Details

Clone	PCNA/13725R
Gene Name	PCNA
Immunogen	Recombinant full-length human PCNA protein
Host	Rabbit
Clonality	Monoclonal
Isotype / Light Chain	IgG / Kappa
Mol. Weight of Antigen	36kDa
Cellular Localization	Nucleus. Cytoplasm.
Species Reactivity	Human
Positive Control	A-431, 293T, Hep G2, NIH/3T3, Raji cells, Human Prostate

*Optimal dilution for a specific application should be determined.

Product Images for Recombinant PCNA (Proliferating Cell Nuclear Antigen) (G1- & S-phase Marker) Antibody



Western Blot Analysis of Human Intestine, Human Skin, A549, HEK293, HeLa, K-562 and Raw lysates using PCNA Recombinant Rabbit Monoclonal Antibody (PCNA/13725R).

Specificity & Comments

Recognizes a non-histone protein of 36kDa, which is identified as proliferating cell nuclear antigen (PCNA). It is also known as cyclin or polymerase delta auxiliary protein. Elevated expression of PCNA/cyclin has been shown in the nucleus during late G1 phase immediately before the onset of DNA synthesis, becoming maximal during S-phase and declining during G2 and M phases. This MAb is excellent for multiple applications.

Supplied As

200ug/ml of Ab purified from Bioreactor Concentrate by Protein A/G. Prepared in 10mM PBS with 0.05% BSA & 0.05% azide. Also available WITHOUT BSA & azide at 1.0mg/ml.

Storage and Stability

Antibody with azide - store at 2 to 8°C. Antibody without azide - store at -20 to -80°C. Antibody is stable for 24 months. Non-hazardous. No MSDS required.

Research Areas

Nuclear Marker, Transcription Factors

Limitations and Warranty

This antibody is available for research use only and is not approved for use in diagnosis. There are no warranties, expressed or implied, which extend beyond this description. Company is not liable for any personal injury or economic loss resulting from this product.