

Recombinant CD36 (Platelet & Microvessel Marker) Antibody

Mouse Monoclonal Antibody [Clone rCD36/13666]

Catalog No	Format	Size
948-MSM9-P0	Purified Ab with BSA and Azide at 200ug/ml	20 ug
948-MSM9-P1	Purified Ab with BSA and Azide at 200ug/ml	100 ug
948-MSM9-P1ABX	Purified Ab WITHOUT BSA or Azide at 1.0mg/ml	100 ug

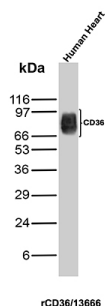
Applications	Tested Dillution	Note
Immunohistochemistry (IHC)	1-2ug/ml	30 min at RT. Staining of formalin-fixed tissues requires heating tissue sections in 10mM Tris with 1mM EDTA, pH 9.0, for 45 min at 95°C followed by cooling at RT for 20 minutes
Western Blot (WB)	2-4ug/ml	

Product Details

Clone	rCD36/13666
Immunogen	Recombinant fragment (around aa227-371) of the human CD36 protein (exact sequence is proprietary)
Host	Mouse
Clonality	Monoclonal
Isotype / Light Chain	IgG2b / Kappa
Mol. Weight of Antigen	53.05kDa
Cellular Localization	Apical cell membrane, Cell membrane, Golgi apparatus, Membrane raft
Species Reactivity	Human
Positive Control	Heart tissue lysate.

*Optimal dilution for a specific application should be determined.

Product Images for Recombinant CD36 (Platelet & Microvessel Marker) Antibody



Western Blot Analysis of human heart tissue lysate using CD36 REcombinant Mouse Monoclonal Antibody (rCD36/13666).

Specificity & Comments

Recognizes a protein of 80kDa-90kDa, identified as CD36. It is expressed on platelets, monocytes and macrophages, microvascular endothelial cells, erythrocyte precursors, mammary epithelial cells, and some macrophage derived dendritic cells. CD36 acts as a receptor for thrombospondin (TSP), collagen types I, IV and V, P. falciparum malaria-infected erythrocytes, and sickle erythrocytes. It also functions as a scavenger receptor, mediating macrophage uptake of oxidized low-density lipoprotein (LDL) and recognition of apoptotic polymorphonuclear leukocytes (PMN). CD36 plays a role in platelet aggregation, macrophage foam cell development, inflammation, and the tissue ischemia observed in sickle cell disease and cerebral malaria. Note that 1-4% of Japanese and East Asia population lack CD36.

Supplied As

200ug/ml of Ab produced in a mammalian-based expression system. Prepared in 10mM PBS with 0.05% BSA & 0.05% azide. Also available WITHOUT BSA & azide at 1.0mg/ml.

Storage and Stability

Antibody with azide - store at 2 to 8 °C. Antibody without azide - store at -20 to -80 °C. Antibody is stable for 24 months. Non-hazardous. No MSDS required.

Limitations and Warranty

This antibody is available for research use only and is not approved for use in diagnosis. There are no warranties, expressed or implied, which extend beyond this description. Company is not liable for any personal injury or economic loss resulting from this product.
